



SLU Scholarships Catalog

Academic Year 2026 - 2027

School of Labor and Urban Studies

25 W 43RD ST, NEW YORK, NY 10036 SCHOLARSHIPS@SLU.CUNY.EDU

Release Version 040126

Table of Contents

| | |
|---|------------|
| School of Labor and Urban Studies (SLU) | 3 |
| Scholarship Manager System | 7 |
| Getting Started in the Scholarship Manager System | 12 |
| Getting Started <i>Checklist</i> | 16 |
| Preparing Your Scholarship Application | 18 |
| SLU Scholarship Opportunities | 22 |
| Scholarship Terms and Conditions | 23 |
| Merit-Based Scholarships | 27 |
| <i>Continuity Scholarship (CONT)</i> | 28 |
| <i>Joseph S. Murphy Scholarship for Diversity in Labor (JSMD)</i> | 34 |
| <i>Solidarity Scholarship (SOLS)</i> | 41 |
| Needs-Based Scholarships | 46 |
| <i>Forward Scholarship (FWDS)</i> | 47 |
| <i>Tuition Grant (TGRT)</i> | 53 |
| Prior Balance Intervention Programs | 59 |
| <i>Balance Assistance Grant (BALA)</i> | 60 |
| <i>Persistence Grant (PRSG)</i> | 65 |
| Union and Employer Scholarships | 70 |
| <i>Lillian Roberts Endowed Scholarship (LILR)</i> | 71 |
| <i>Mayor's Graduate Scholarship Program (MGSP)</i> | 76 |
| <i>Mayor's Undergraduate Scholarship Program (MUSP)</i> | 82 |
| <i>Public Service Scholarship (PSVC)</i> | 88 |
| <i>Robin Gillespie Scholarship for Labor Relations (RGLS)</i> | 94 |
| <i>Teacher's Scholarship for Community Leadership (TSCH)</i> | 99 |
| Other Scholarships and Emergency Funds | 105 |

| | |
|---|-----|
| <i>Experiential Learning Scholarships</i> | 106 |
| <i>Food Access Initiative</i> | 109 |
| <i>Part-Time Initiative (PTI)</i> | 110 |
| <i>Petrie Emergency Grant</i> | 112 |
| <i>Student Note Taker Award</i> | 114 |
| <i>YLB Emergency Fund</i> | 115 |

School of Labor and Urban Studies (SLU)





The School of Labor and Urban Studies (SLU), part of the City University of New York, is dedicated to expanding access to higher education for working adults and traditional students through the study of labor, urban life, and social justice. The School combines rigorous academic inquiry with applied learning to prepare students for leadership roles in labor organizations, public service, community development, and related fields, with a focus on access, equity, and civic engagement.

SLU was formally established in 2018, building on the legacy of the Joseph S. Murphy Institute for Worker Education and Labor Studies, which expanded educational opportunities for workers and union members in New York City. Today, the School maintains strong partnerships with labor unions, community organizations, and public sector agencies, reflecting its continued commitment to applied scholarship and public impact.

SLU offers interdisciplinary undergraduate, graduate, and certificate programs in labor and urban studies. Coursework examines work, inequality, public policy, urban development, and community leadership, while experiential opportunities such as internships and community-based learning help students develop practical skills alongside academic knowledge. Graduates are prepared to address complex social and economic challenges facing workers, cities, and communities.

To support student success, SLU offers institutional scholarships for newly admitted and continuing degree and certificate students. Awards are available at the undergraduate and graduate levels and are typically based on academic achievement, commitment to labor and public service, and financial need.

Dear students,

At SLU, we are committed to supporting your academic journey and helping you make the most of your educational experience. SLU scholarships are designed to help reduce tuition costs, recognize your achievements, and provide additional support so you can focus on your studies, professional growth, and community impact.

Our scholarship opportunities reflect SLU's commitment to student success. They recognize academic excellence, leadership, community engagement, and dedication to the fields of labor and urban studies. Whether you are beginning your program or continuing your studies, these opportunities are intended to support your progress, encourage persistence, and help you reach your educational and professional goals.

Rooted in the legacy of the Joseph S. Murphy Institute, SLU remains dedicated to expanding access to higher education and supporting students in achieving meaningful academic and professional outcomes. Through these scholarship opportunities, we are proud to invest in your success and in the communities you serve.

We are honored to welcome you to the SLU community and look forward to supporting your continued growth and achievement.

Sincerely,

Associate Deans

Rita "Kiki" Edozie, Ph.D.

Senior Associate Dean & Chief Academic Officer

Burt Sacks

Associate Dean for Finance and Operations

Welcome, students!

We're excited to have you join our community and want to make sure you have the resources and support you need to focus on your studies, advance your professional goals, and feel connected at SLU.

At SLU, the Office of Student Accounts and the Office of Student Affairs & Services work closely together to support your success. Both offices are here to help you navigate important parts of your experience—from managing tuition and financial support to accessing student services and getting involved in campus life.

The Office of Student Accounts supports your financial experience and is your main resource for anything related to your student account, tuition bill, tuition payments, scholarships, and grants that help make your education more accessible and support your continued progress. Through the Scholarship Manager System, you can explore and apply for available SLU scholarships, and any awards you receive will be applied directly to your tuition statement.

The Office of Student Affairs & Services supports you throughout your time at SLU by providing a range of student services, including academic advising, writing assistance, career services, counseling and wellness support, accessibility services, and student life activities. The Student Affairs & Services team is here to help you navigate SLU, connect with campus resources, and stay on track with your academic and professional goals.

Together, our offices are dedicated to creating a supportive environment where you can succeed. We encourage you to take advantage of the scholarship opportunities available and to connect with our teams throughout your academic journey.

We look forward to supporting your success.

Warm Regards,

Michael Giliberti

Director of Student Financials

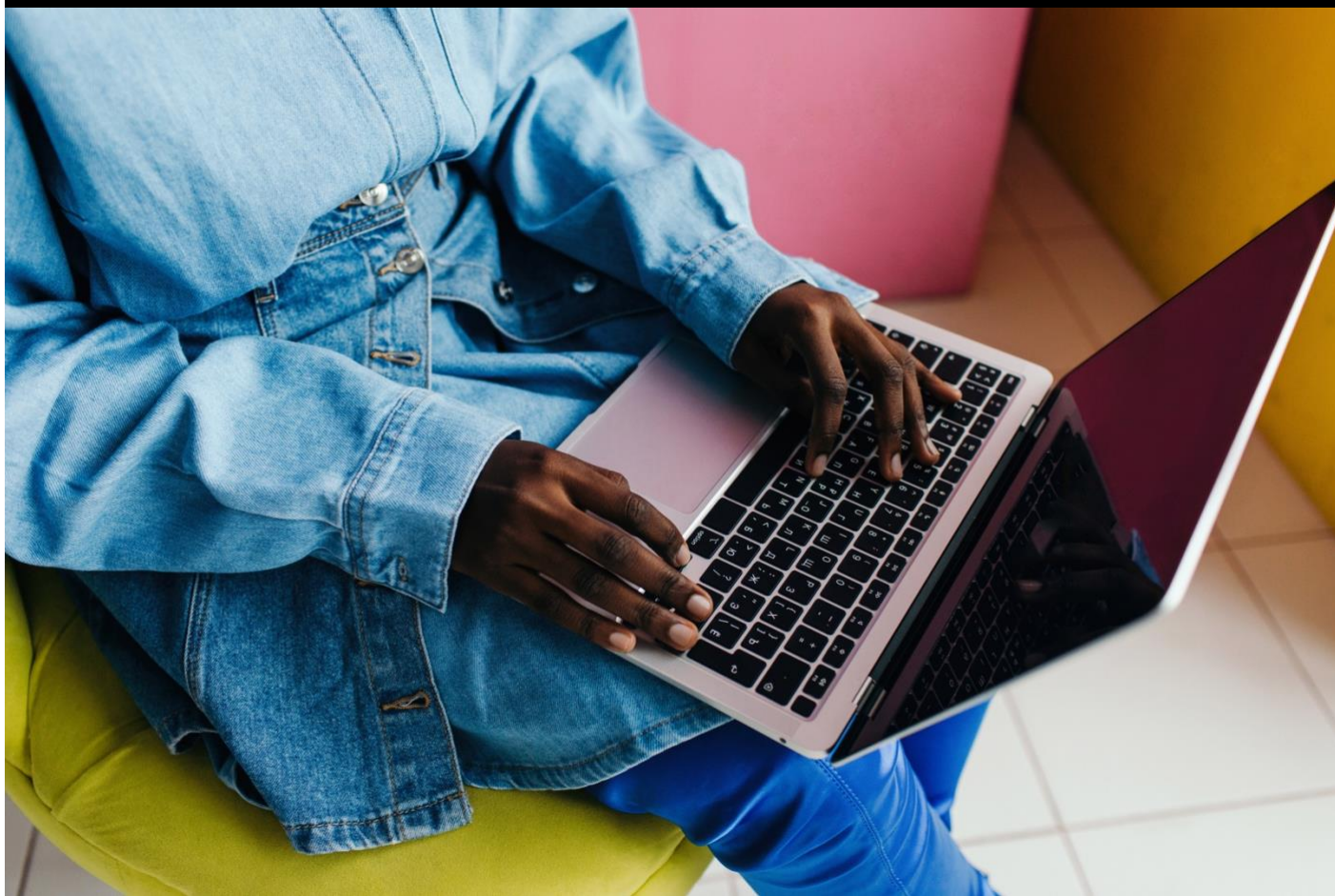
Office of Student Accounts

Rochel Pinder

Director of Student & Community Affairs

Office of Student Affairs

Scholarship Manager System



Scholarship Manager is a fully integrated scholarship application and awarding system.

Scholarship Applications



Most of SLU's scholarship applications are accessible through the online **Scholarship Manager System**. Some SLU scholarships, however, do not necessitate an application. In such cases, eligibility is determined using alternative means (e.g., selection through the admissions process, affiliation with a partnership, or other qualification). We highly recommend you thoroughly review the requirements for each opportunity and take careful note of the application criteria and/or conditions for selection.

Types of Scholarship Applications



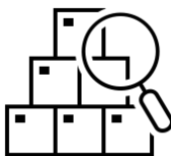
SLU Scholarship Application: By leveraging responses in key categories, along with the data available in CUNYfirst, the application can accurately identify the opportunities for which you are eligible to apply. This way, you will be able to apply for multiple scholarships in one convenient form!



Standalone Application: These applications are equally intuitive but are tailored for niche opportunities that may have very specific requirements, non-standard open/close dates, or other unique criteria. Current standalone applications are:

- **Persistence Grant (PRSG)**
- **Diversity Scholarship (JSMD)**

Important Note: To apply for a SLU Scholarship, **you must be enrolled as a degree or certificate-seeking student**. Non-degree and e-permit students are not eligible.



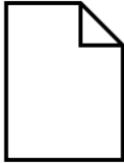
External Application: Scholarship Manager includes various external scholarships from esteemed organizations. These applications cannot be submitted through the Scholarship Manager System. Click the black 'Apply Now' button next to the listing to be redirected to the organization's website and follow their instructions to apply.

System Notifications

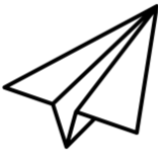
All notifications from the Scholarship Manager System will be sent to your campus email. If a campus email has not been assigned to you, the system will temporarily use your personal email on file. Please note that once a campus email is assigned, all notifications will be rerouted there. This setting cannot be customized.

Important Note: Notifications regarding awards from the YLB Fund and Petrie Emergency Grant are released outside of the Scholarship Manager System.

Types of Notifications



Incomplete Application: Prompts applicants to complete their applications by the deadline.



Status Updates: Notifies applicants to check their Scholarship Manager Account to review award offers.

Recommendation: Regularly check your Scholarship Manager Portal and CUNYfirst to stay informed about any changes to your award status. Feel free to contact us at Scholarships@slu.cuny.edu with any questions or concerns.



Wrap-Up: At the conclusion of an award season, applicants will be prompted to check their Scholarship Manager Portal to view the final status of their award or non-award.

Award Offers



Please note that while committees strive to review applications promptly, **there is no fixed turnaround time for application decisions.** We appreciate applicants' understanding and patience throughout this process.



You can review scholarship offers by logging into the Scholarship Manager System and selecting "My Awards". The information displayed in "My Awards" is accurate at the time of viewing but may be subject to change due to enrollment activity, financial aid restrictions, or other factors that could necessitate an adjustment to award offers.



Scholarship offers in "My Awards" reflect your eligibility at the time of viewing but are still considered an estimate until it is authorized for the current academic term. Factors such as changes in enrollment, financial aid restrictions, or failure to meet eligibility criteria may lead to adjustments or cancelation—even after disbursement in some cases.



Data Transfer
(Pending Disbursement)

SLU Scholarships do not appear immediately in your CUNYfirst account or on your Tuition Statement.

- Once your scholarship offer has been approved for **data transfer**, it will migrate from the Scholarship Manager System to CUNYfirst. At that point, your award will show as "anticipated aid" on your Tuition Statement—this signals that a payment is expected but not yet disbursed.

For a detailed timeline, we encourage you to review the [Tuition Calendar](#) for the term. Look for the **SLU Scholarship Disbursement Schedule**, which outlines the key stages of award processing: Data Transfer → Authorization → Disbursement. This will help you understand when your scholarship is expected to be reflected in your account.

Award Disbursement



Scholarships move from anticipated aid to disbursed status after they are **authorized**.

- Once authorized, disbursement typically occurs within 30 days.
- To ensure your scholarship disburses as planned, you must continue to meet all eligibility requirements, including maintaining your enrollment and fulfilling any other conditions tied to the award.
- Although rare, disbursed amounts may still be adjusted. Awardees who do not meet the minimum eligibility requirements may see reductions or cancellations of current and future scholarship awards. Other factors that could lead to adjustments include, but are not limited to, financial aid restrictions, changes in enrollment status, institutional policies, or other relevant considerations.

For a detailed timeline, we encourage you to review the [Tuition Calendar](#) for the term. Look for the **SLU Scholarship Disbursement Schedule**, which outlines the key stages of award processing: Data Transfer → Authorization → Disbursement. This will help you understand when your scholarship is expected to be reflected in your account.



Regardless of where your scholarship is in the pipeline, you are still responsible for paying any **out-of-pocket costs** by the **tuition due date**.

- If your SLU Scholarship has not yet appeared on your Tuition Statement—either as anticipated aid or a disbursed payment—you can still estimate your out-of-pocket cost by reviewing your semester bill in CUNYfirst and subtracting your scholarship award(s) for that term. Be sure to confirm that the award applies to the correct semester, as SLU scholarships are term specific.
 - If your **scholarship** will only **partially cover your tuition**, you'll need to pay or set up a payment plan for the remaining balance by the payment deadline.
 - If your **scholarship** is expected to **cover your full tuition**, no further action is needed—unless your enrollment or eligibility status changes.

Getting Started in the Scholarship Manager System



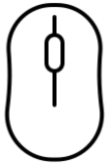
Welcome!



To apply for institutional scholarships at School of Labor and Urban Studies, **you must first be admitted to a degree or certificate program and accept an offer of admission.** If you have not received an offer letter, please reach out to us at admissions@slu.cuny.edu.

Please note, non-degree students are not eligible to apply for SLU scholarships.

Claim Your Scholarship Manager Account



To claim a Scholarship Manager Account, **you are required to accept an offer of admissions from SLU. Your Scholarship Manager account will be activated within 3-5 days of accepting your admissions offer.** Should you have any inquiries or require assistance with accepting your offer, please don't hesitate to contact: admissions@slu.cuny.edu.

Steps to Claiming a Scholarship Manager Account: [Click Here](#)

Scholarship Manager Password and E-mail




Password: Ensure that you store your password and secret question in a secure place. In case you ever forget your password, don't worry; we're here to help. Just reach out to us at scholarships@slu.cuny.edu for assistance.



Notifications from Scholarship Manager: Please note that all notifications from Scholarship Manager will be automatically redirected to your campus email once one is assigned to you. This setting is not customizable.

Need Help Accessing Your SLU Email? If you encounter any issues accessing your SLU email, please don't hesitate to reach out to the SLU Service Desk for assistance. You can contact them by phone at (646) 313-8440 or send an email to SLU IT Service Desk: ServiceDesk@slu.cuny.edu. They are here to help with your technology-related inquiries.

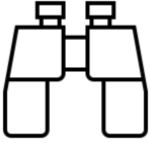
Complete the Free Application for Federal Student Aid (FAFSA)

| | |
|---|--|
| Required Aid Year: | 2026 – 2027 |
| Start a FAFSA: | <u>https://studentaid.gov/</u> |
|  | <p>Even if you're uncertain about your eligibility for federal or state aid, completing the FAFSA is crucial. The information obtained from your FAFSA is essential for our committees to assess your qualification for some SLU scholarships. Additionally, filing the FAFSA is necessary to qualify for federal student loans. Moreover, you might be eligible for other types of federal or state aid. For assistance, feel free to reach to: financialaid@slu.cuny.edu.</p> |

All students, regardless of their citizenship status, are eligible to file a FAFSA:

- **Students *with* a Social Security Number** can submit a FAFSA electronically.
- **Students *without* a Social Security Number** cannot file an electronic FAFSA. You can, however, request a paper FAFSA by calling 1-800-4-FED-AID. Complete the paper form and mail it for processing. Please note that the paper-based process typically takes longer for completion.

Search for Scholarships



In our online catalog, you'll find a wide range of both internal and external scholarships. To make your search more efficient, we recommend utilizing the category search filter. This will allow you to narrow down and view specific scholarship opportunities that align with your interests and qualifications. Happy searching!

Institutional (SLU) Opportunities



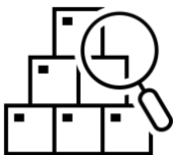
Internal opportunities refer to scholarships offered by the CUNY School of Labor and Urban Studies. To apply for a CUNY-SLU Scholarship, follow these simple steps:

- Visit our [scholarship search](#) page.
- Click the red “Apply Now” button located at the top of the search page.
- Log in to your Scholarship Manager Account.

Important Note About Internal Opportunities

- A scholarship application can only be submitted once per academic year, even if there are multiple award seasons.
- Pay careful attention to the scholarship requirements. If you do not see a particular opportunity in your Applicant Portal, it's probable that you do not meet the eligibility criteria for that specific scholarship.

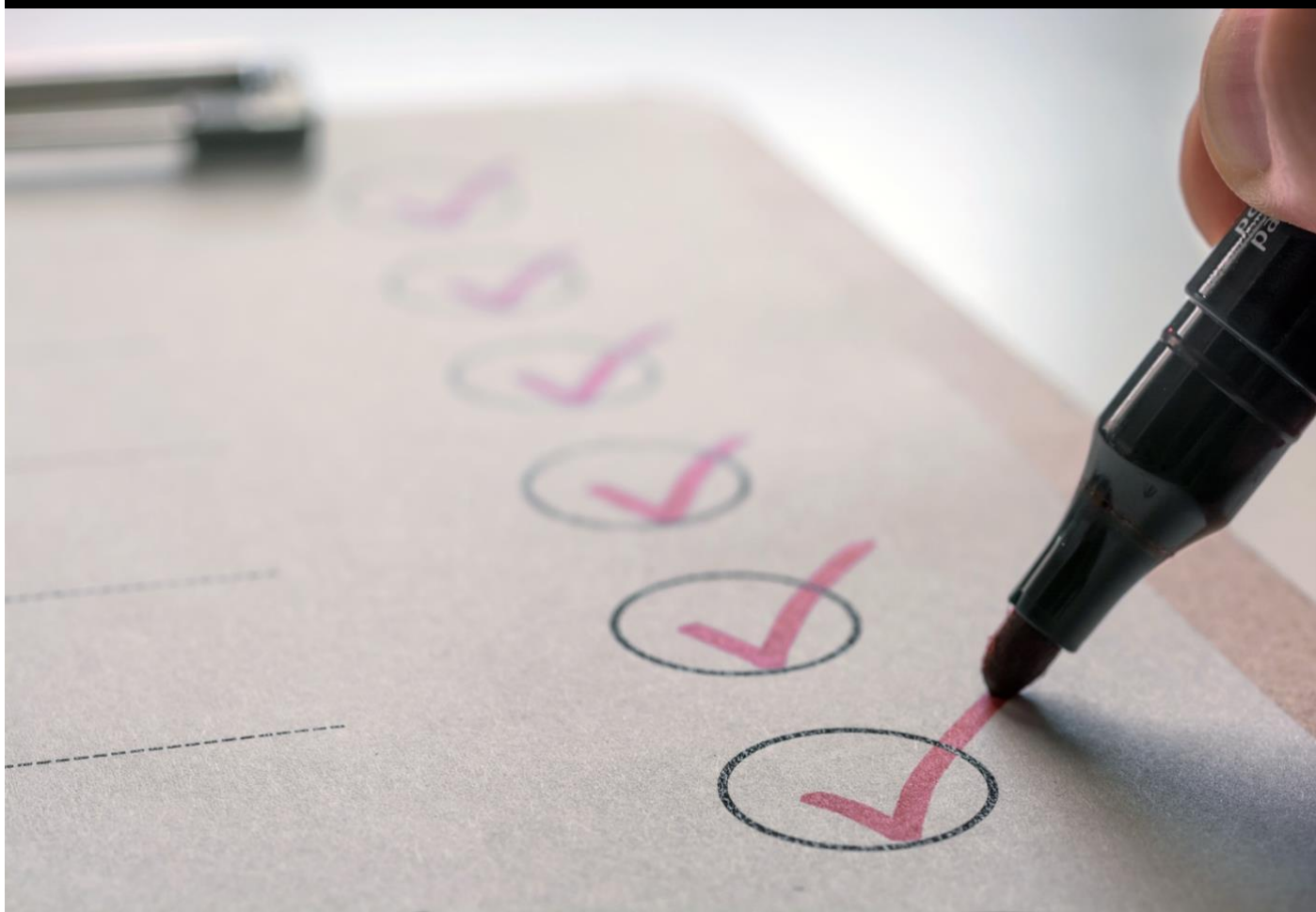
External Opportunities



We also provide access to various external scholarship opportunities offered by esteemed organizations. It's important to note that you **cannot** apply for these external opportunities using Scholarship Manager. To apply for external scholarships, follow these simple steps:

- Visit our [scholarship search](#) page.
- Click the black “Apply Now” button located next to the scholarship description.
- You will be redirected to the organization's website to apply.

Getting Started *Checklist*



✓ Access Your Student E-mail



Regularly **check your SLU email** for marketing materials and updates related to scholarships and other important matters. If you encounter any issues accessing your SLU email, please don't hesitate to reach out to the SLU Service Desk for assistance. You can contact them by phone at (646) 313-8440 or send an email to: ServiceDesk@slu.cuny.edu. They are here to help with your technology-related inquiries.

✓ Claim Your Scholarship Manager Account and Login



Once you've reached the [Scholarship Manager Page](#), look for the "Students" tile and click [login](#).

- On the login page, you will be prompted to enter your username, which is your EMPL ID, and your password.
- After successfully logging in, you'll be directed to applicant portal. Here, you'll find a list of available scholarship applications. Take the time to thoroughly complete each application by providing the required information, essays, and any necessary documents.

✓ Complete a FAFSA



Even if you believe you may not qualify for federal or state financial aid, submitting the Free Application for Federal Student Aid (FAFSA) is still required for consideration for some SLU scholarships. We strongly recommend completing the FAFSA early each academic year. If you need assistance with the FAFSA or have any questions, please contact FinancialAid@slu.cuny.edu.

Preparing Your Scholarship Application





Stay Ahead of Deadlines: Keep track of when scholarship applications open and close by regularly checking the [CUNY-SLU website](#) and [Scholarship Manager: Important Deadlines](#). There you will find the most up-to-date and precise information regarding application deadlines, ensuring you never miss out on valuable opportunities.



Pay Attention to Details: Take the time to read through the instructions provided within the scholarship application. Thoroughly review your responses before submission, ensuring they are accurate and comprehensive. Precision in your application increases your chances of success.



Craft Compelling Essays: When tasked with writing an essay, prioritize impeccable grammar, spelling, and punctuation. Consider seeking a second pair of eyes to proofread your work for polish and accuracy. Should you require assistance in shaping your scholarship essay, SLU's Learning Hub is at your service. Reach out to them for guidance in creating a captivating and well-structured essay that showcases your strengths and aspirations. Your success is paramount to us, and we are committed to providing the support you need to excel in your scholarship pursuits.



Organize Attachments: Some scholarships will require transcripts, a professional resume, and/or letters of reference. It's crucial to plan and collect all required documentation well in advance. Waiting until the last minute is not advisable, as it could jeopardize your chances of being considered for the scholarship. Allocate ample time to gather these materials, as they play a pivotal role in enhancing the strength of your application.



Letters of Recommendation: You should not collect a letter from your recommender with the expectation of uploading or emailing it. Instead, recommenders are added directly to the application. You will be prompted to include their full name and email address. Once added, your recommenders will receive an email containing a secure link and PIN to complete the online recommendation form. This notification is triggered as soon as you add them to the application; you do not need to submit the application for your recommender to be notified. We strongly advise informing your chosen recommender in advance, so they know to expect an email from notify@ngwebsolutions.com.

Important Information About Letters of Recommendation

Your recommender must complete and submit the [online recommendation form](#). Upon adding a recommender to your application, they will promptly receive an email notification containing a secure link and PIN to complete the online recommendation form.

If your recommender has not received the secure message, please first confirm that their email address was entered correctly. If the email address is accurate, ask your recommender to check their spam or junk folder. If your recommender is using a corporate or campus email account, their institution's firewall may be blocking the message. In that case, you may wish to ask them to provide an alternative email address. If your recommender continues to experience difficulty accessing the secure email or PIN, please contact scholarships@slu.cuny.edu for assistance.

Recommenders have the option to add an attachment, which could be a written letter, but this is entirely optional. **Please be advised, emailed recommendation letters will not be accepted!**

To monitor the status of your recommendations, including which have been submitted and which are outstanding, please log in to the Scholarship Manager System. Navigate **My Applications > [Select Application] > Manage/Edit Letters of Recommendation**. For recommendations that have been pending for a while, you have the option to send a reminder or withdraw the recommender and replace them with a new one.

**** This Page Intentionally Left Blank ****

SLU Scholarship Opportunities



Scholarship Terms and Conditions

Institutional scholarship offers are subject to change at any time.

The School of Labor and Urban Studies reserves the right to reduce or cancel a scholarship, whether offered or disbursed, based on various factors, including but not limited to budget availability, changes in enrollment, loss of eligibility, financial aid restrictions, citizenship status, conflicts arising from multiple awards, and other institutional policies.

Some institutional scholarships may be reduced by other gift aid.

When a scholarship mentions that it "may be reduced by other gift aid," it means that if you receive additional financial assistance, such as grants, fellowships, or scholarships from other sources, the total amount of the scholarship you originally received might be adjusted or decreased. For example, if you were awarded a scholarship for \$2,000, but then you also receive a \$1,000 grant from another organization, the scholarship amount could be reduced to avoid an over-award situation where you are receiving more aid than the total cost of your education. This is a common practice to ensure that financial assistance is distributed fairly and appropriately to cover educational expenses without exceeding the overall need or cost.

Some institutional scholarships cannot be used for other educational expenses.

When a scholarship stipulates that it "cannot be used for other educational expenses," it means that the funds provided by the scholarship are restricted and can only be used for specific purposes, typically limited to tuition and fees. Other educational expenses, such as textbooks, room and board, transportation, or personal expenses, are not covered by the scholarship. In essence, the scholarship is designated for a specific category of costs, usually the direct costs associated with attending an educational institution and cannot be applied to other non-tuition expenses. It's important for recipients to be aware of these limitations and plan their budget accordingly.

Institutional scholarships may have specific citizenship requirements.

Institutional scholarships must adhere to citizenship restrictions set by the opportunity, funding source, or the University. Such provisions would be listed under the scholarship’s “minimum requirements” and may list the applicant be a:

- United States Citizen
- Permanent Resident (Green Card Holders)
- Asylee
- Refugee
- Non-Immigrant Visa Holder (F1/J1/TN)
- Other Immigrant or Otherwise Undisclosed

*Some opportunities might refer to **status groups** as an **eligible immigrant or eligible non-immigrant**.*

| | |
|--|--|
| Eligible Immigrants → | <ul style="list-style-type: none">• Permanent Resident (Green Card Holders)• Asylee• Refugee |
| Eligible Non-Immigrant (Visa) → | <ul style="list-style-type: none">• F1 (Student Visa)• J1 (Exchange Visitor Visa)• TN (Trade NAFTA Visa) |

The City University of New York (CUNY) is committed to fostering an inclusive and supportive environment for all students, regardless of their immigration or citizenship status. CUNY does not track or disclose students’ citizenship or immigration status beyond what is required for administrative and legal compliance, such as determining eligibility for in-state tuition, financial aid, or specific government-sponsored programs. CUNY strictly adheres to federal, state, and local laws governing student privacy, including the Family Educational Rights and Privacy Act (FERPA) which protects student records from unauthorized disclosure. CUNY does not share student immigration information with ICE, DHS, or any other immigration enforcement agency. If law enforcement requests student records, CUNY follows strict legal protocols to protect student privacy and requires a valid court order or subpoena.

For additional guidance and support, students may contact campus-based resources, including the [CUNY Citizenship Now!](#) Program, which provides free and confidential legal assistance regarding immigration matters.

Decisions Related to Award Offers, Non-Offer, and Adjustments **Cannot Be Appealed.**

By applying for an SLU scholarship, students acknowledge and accept that they waive the right to appeal decisions or actions made by the scholarship committee, the scholarship office, or automated systems, except in cases of egregious error where documented and compelling evidence exists to justify reconsideration. Reasons that are generally not subject to appeal include, but are not limited to, missed deadlines, dissatisfaction with decision timelines, non-award decisions, reductions or cancellations of awards due to loss of eligibility, non-compliance with requirements, over-awards, or adjustments resulting from other gift aid.

**** This Page Intentionally Left Blank ****

Merit-Based Scholarships

are awarded to students in recognition of outstanding achievement or demonstrated excellence. Selection is typically based on academic performance, leadership, professional accomplishments, community engagement, or other distinguished contributions that align with the mission and values of the institution or sponsoring organization. These scholarships are not primarily determined by financial need, but rather by a student's demonstrated merit and potential to contribute meaningfully to their field of study or community.

In This Section:

- **Continuity Scholarship (CONT)**
- **Joseph S. Murphy Scholarship for Diversity in Labor (JSMD)**
- **Solidarity Scholarship (SOLS)**

Continuity Scholarship (CONT)

Conquer Your Academic Journey, One Credential at a Time



Automatic Selection
No Application Required

Continuity Scholarship (CONT)

About

The Continuity Scholarship celebrates and supports students who have successfully earned a Certificate/Advanced Certificate from the School of Labor and Urban Studies and are now dedicated to furthering their education by pursuing a degree. Degrees play a pivotal role in achieving and maintaining economic stability, advancing careers, and fostering social mobility for workers, individuals, and families alike. This scholarship plays a crucial role in expanding access to higher education for SLU's esteemed adult learners.

Award Amount

- Up to \$1,500 per semester; maximum of \$3,000 for one academic year.
- Covers tuition and fees for 2 consecutive semesters (fall/spring).
- May be reduced by other gift aid received.
- Cannot be used for other for other educational expenses.

Minimum Requirements

- Must have earned a Certificate or Advanced Certificate from CUNY-SLU.
- Certificate students must have maintained a cumulative GPA of 2.5 or higher, while Advanced Certificate students must have maintained a GPA of 3.0 or higher.
- Newly admitted to a B.A. or M.A. degree for the fall.
- United States citizen, legal resident, and individuals in an eligible immigrant or non-immigrant status.

Enrollment Requirements

- Minimum 3-credits enrolled per semester in a B.A or M.A program.

Renewable Requirements

- Minimum GPA 2.5 for undergraduates; 3.0 graduate students.

Application Requirements

- N/A

Application Form : N/A

Applicant Codes: 199

**** NO APPLICATION IS REQUIRED ****

The selection process for this opportunity does not require a formal application. Continuity Scholarships are awarded automatically, prioritizing students with the highest GPA who enroll in a degree program after completing a certificate or advanced certificate. Awards are granted on a until all available funds are exhausted. Please note that meeting the minimum criteria does not guarantee receipt of the Continuity Scholarship. Scholarships are awarded on a first-come, first-served basis during the admissions process, and requests for special consideration cannot be accommodated.

Awards

1. How much does this scholarship pay in tuition and fees?

This scholarship provides financial support of up to \$1,500 for qualified tuition and fees per semester and up to \$3,000 for the academic year.

2. How long will I receive this scholarship?

The scholarship duration is up to one academic year or two consecutive semesters (fall/spring).

There is up to 2 award installments

3. Can this scholarship pay other educational costs?

No. This scholarship cannot cover other educational expenses beyond tuition and fees.

4. Can I receive gift aid from other sources if I am awarded this scholarship?

This scholarship will be reduced/canceled if an awardee prefers to use other non-refundable employer benefits/scholarships/financial aid towards part/all their tuition. Awardees are not entitled to the difference between the original scholarship offer and the modified one. Those funds are considered “unused” and will NOT be carried over to additional semester(s), academic years, programs, course costs, or other educational expenses. If you believe there will be a conflict, please discuss this with a scholarship administrator by contacting: Scholarships@slu.cuny.edu. Questions about Financial Aid should be directed to financialaid@slu.cuny.edu or (212) 817-7460.

5. Can I receive a refund from this scholarship if it pays more than what I owe?

No. This scholarship will be reduced/canceled if an awardee prefers to use other non-refundable employer benefits/scholarships/financial aid towards part/all their tuition. If you believe there will be a conflict, please discuss this with a scholarship administrator by contacting: Scholarships@slu.cuny.edu.

Cancelations

1. Is this scholarship canceled if I drop or withdraw from courses?

Scholarship recipients are encouraged to consider all factors before deciding to drop or withdraw from their courses. A SLU Scholarship is an investment in our students, and we encourage recipients to take their studies seriously. Awardees who drop or withdraw may have their scholarship revoked, so we advise caution when taking such action.

For this scholarship to disburse, awardees must be enrolled in a minimum of 3 credits by the University census date.

Withdraw Drop (WD): You dropped courses and are now below 3-credits, as of the University census date.

- **Action: The scholarship for the current term will be canceled, and you will be responsible for any outstanding tuition. If the scholarship is recurring, future scholarship awards will also be canceled.**

Withdrawal (W, WU, WA, WN): You withdrew from courses after the University census date and are now below 3-credits of active enrollment.

- **Action: Future scholarship payments will be canceled.**

2. What if I Withdraw Drop (WD) from courses but still maintain minimum enrollment?

As long as you maintain the required minimum enrollment, your scholarship will be disbursed. However, the amount may be adjusted to cover tuition costs. Please note that scholarships have a fixed allocation or a set number of disbursement installments. If any portion of your scholarship was applied toward tuition for dropped courses, it will still count toward your total allocation or as a completed installment. SLU will not increase the scholarship amount or extend the number of installments under any circumstances.

3. Is this scholarship canceled if I take a leave of absence?

Continuity Scholarships may be deferred to the next semester of enrollment if a Leave of Absence (LOA) or similar condition is approved by the Registrar's Office.

4. What happens if my GPA falls below the minimum requirement?

Awardees must maintain the minimum cumulative GPA for their academic level:

- **2.5 for undergraduates**
- **3.0 for graduate students**

Failure to maintain the required GPA will cause future scholarship installments to be canceled.

Your cumulative GPA is derived from all coursework taken in an academic term. Accordingly, scholarship recipients are strongly encouraged to resolve incomplete (INC) grades immediately. The system cannot make an accurate determination of your cumulative GPA with incomplete coursework. Incomplete (INC) grades that remain unresolved into the next semester, when a scholarship installment is scheduled for disbursement, will result in the award being decertified. This will lead to the cancellation of that installment as well as any future disbursements.

Joseph S. Murphy Scholarship for Diversity in Labor (JSMD)

Promoting Diversity and Excellence in Union Leadership and Labor Studies



Joseph S. Murphy Scholarship for Diversity in Labor (JSMD)

About

Over the past 50 years, the demographics of the U.S. labor force have changed significantly. The composition of national union leadership, however, does not reflect the changing demographics of our workforce. The academic field of Labor Studies reflects a similar imbalance. The Joseph S. Murphy Scholarship for Diversity in Labor is dedicated to the purpose of fostering representative leadership in the labor movement and in the academic discipline of Labor Studies.

Each year since 2013, the City University of New York has supported the Joseph S. Murphy Scholarship for Diversity in Labor by providing an annual challenge-grant. The CUNY School of Labor and Urban Studies raises matching funds annually with donations from generous individuals and organizations representing various sectors and professions, including labor unions, academia, non-profit organizations, and businesses.

The scholarship was designed to create pipelines that will bring underrepresented individuals to the forefront of the labor movement and labor education. Each year the CUNY School of Labor and Urban Studies will award up to \$150,000 in scholarships to qualified applicants, both at the graduate and undergraduate levels.

Award Amount

- Up to 20k in tuition, fees, and other college costs for undergraduate students.
- Up to 30k in tuition, fees, and other college costs for graduate students.
- Pays qualified tuition, fees, and other educational expenses.

Each semester, JSMD is paid at a rate of:

- \$340 per credit hour for **undergraduate** students; undergraduate awards cannot exceed \$20,000

—OR—

- \$1,000 per credit hour for **graduate** students; graduate awards cannot exceed \$30,000.

Minimum Requirements

- Early Admission to the B.A. in Labor Studies for the FALL semester.
- No less than 60 college credits accrued from an accredited institution.
- Minimum 2.5 GPA from prior undergraduate work.

—OR—

- Early Admission to the M.A. in Labor Studies for the FALL semester.
- Minimum 3.0 GPA from prior undergraduate work.

—AND—

- United States Citizen

Enrollment Requirements

- SLU recommends JSM Diversity Scholarship awardees enroll in 12-credits or more each semester. Please consult with your academic advisor.

Renewable Requirements

- 2.5 GPA for undergraduates; 3.0 GPA for graduates.

Application Requirements

- Essays to demonstrate potential for leadership in social justice movements and/or the capacity for academic scholarship in the field of Labor Studies.
- Two letters of recommendation from academics and/or practitioners in social justice movements, unions, or labor education.
- One writing sample.
- Virtual or in-person interview (if requested)

Application Form: JSM Diversity Scholarship Application

Applicant Code: 199

You can apply for this opportunity via the JSM Diversity Scholarship Application "JSMD SCH APP." To access the application, please log in to Scholarship Manager and navigate to "My Applications." Please note that the JSMD SCH APP will only be visible in the Applicant Portal if you meet the minimum eligibility requirements. We encourage you to review all eligibility criteria beforehand.

Ways to Log in:

- Scroll to the very top of [this page](#) and click the red "Apply Now" button, followed by "Student Login" **OR**
- Navigate back to the [homepage](#) and select "Student Login"

1. How much does this scholarship pay in tuition and fees?

This scholarship provides financial support of up to:

- **\$340 per credit hour** for qualified **undergraduate** tuition and fees. **Undergraduate awards are capped at \$20,000.**
- **\$1,000 per credit hour** for qualified **graduate** tuition and fees. **Graduate awards are capped at \$30,000.**

Important Note: Unused funds, regardless of the reason, will **not** be carried over to additional semester(s), academic years, programs, course costs, or other education expenses.

2. How long will I receive this scholarship?

The scholarship duration is up to three academic years or nine consecutive semesters (fall, spring, and summer) or until the award is depleted.

There are up to 9 award installments.

3. Can this scholarship pay other educational costs?

Yes. This scholarship can cover other educational expenses beyond tuition and fees. Initially, it's applied to tuition and fees, and any surplus is refunded to the awardee. Students can use this refund for textbooks, transportation, and other college-related expenses

4. Can I receive gift aid from other sources if I am awarded this scholarship?

Yes. This scholarship will not be reduced or canceled if an awardee chooses to utilize other non-refundable employer benefits, scholarships, or financial aid to cover part or all their tuition. **Questions about Financial Aid should be directed to financialaid@slu.cuny.edu or (212) 817-7460.**

5. Can I receive a refund from this scholarship if it pays more than what I owe?

Yes. This scholarship can cover other educational expenses beyond tuition and fees. Initially, it's applied to tuition and fees, and any surplus is refunded to the awardee. Students can use this refund for textbooks, transportation, and other college-related expenses. However, it may be modified if you drop your courses.

Cancelations

1. Is this scholarship canceled if I drop or withdraw from courses?

Scholarship recipients are encouraged to consider all factors before deciding to drop or withdraw from their courses. A SLU Scholarship is an investment in our students, and we encourage recipients to take their studies seriously. Awardees who drop or withdraw may have their scholarship revoked, so we advise caution when taking such action.

For this scholarship to disburse, awardees must be enrolled in a minimum of 3 credits by the University census date.

Withdraw Drop (WD): You dropped courses and are now below 3-credits, as of the University census date.

- **Action: The scholarship for the current term will be canceled, and you will be responsible for any outstanding tuition. If the scholarship is recurring, future scholarship awards will also be canceled.**

Withdrawal (W, WU, WA, WN): You withdrew from courses after the University census date and are now below 3-credits of active enrollment.

- **Action: Future scholarship payments will be canceled.**

2. What if I Withdraw Drop (WD) from courses but still maintain minimum enrollment?

As long as you maintain the required minimum enrollment, your scholarship will be disbursed. However, the amount may be adjusted to cover tuition costs. Please note that scholarships have a fixed allocation or a set number of disbursement installments. If any portion of your scholarship was applied toward tuition for dropped courses, it will still count toward your total allocation or as a completed installment. SLU will not increase the scholarship amount or extend the number of installments under any circumstances.

3. Is this scholarship canceled if I take a leave of absence?

Awardees are expected to complete their program without interruptions. Diversity Scholarships may be deferred to the next semester of enrollment if a Leave of Absence (LOA) or similar condition is approved by the Registrar's Office. Without this approval, the scholarship will not be reinstated upon return.

4. What happens if my GPA falls below the minimum requirement?

Awardees must maintain the minimum cumulative GPA for their academic level:

- 2.5 for undergraduates
- 3.0 for graduate students

Failure to maintain the required GPA will result in a warning, allowing one additional semester to improve the GPA. If the minimum requirement is not met by the end of that period, the scholarship will be canceled.

Your cumulative GPA is derived from all coursework taken in an academic term. Accordingly, scholarship recipients are strongly encouraged to resolve incomplete (INC) grades immediately. The system cannot make an accurate determination of your cumulative GPA with incomplete coursework. Incomplete (INC) grades that remain unresolved into the next semester, when a scholarship installment is scheduled for disbursement, will result in the award being decertified. This will lead to the cancellation of that installment as well as any future disbursements.

Academic Advisement

All students enrolled in CUNY School of Labor and Urban Studies degree programs must meet with an academic advisor prior to the start of each semester. The goal is to determine the best course of study to meet scholarship and degree requirements. [Click here](#) to find your advisor

Healthcare Options for Non-NYS Residents

Students with a permanent residence outside of New York State should contact the health insurance marketplace within the state in which they reside. Since each state offers a variety of healthcare plans and options and have differing requirements for eligibility, students will need to discuss their specific case with the appropriate state-affiliated healthcare advisor.

Solidarity Scholarship (SOLS)

Advancement and Career Mobility Through Post-Secondary Education



Solidarity Scholarship (SOLS)

About

The Solidarity Scholarship broadens educational access for new, non-traditional, or returning adult students. Applicants are required to showcase their commitment to enhancing community welfare across academic, professional, social, or political spheres, illustrating how their studies will empower them to make a meaningful difference.

Award Amount

- Cost of two courses at the NYS resident rate: maximum of 6 credits for graduate students and 8 credits for undergraduate students.
- Covers the cost of tuition only for fall and/or spring semesters.
- May be reduced by other gift aid.
- Cannot be used for other for other educational expenses.

Minimum Requirements

- Newly admitted in a Certificate or Advanced Certificate.
- United States citizen, legal resident, and individuals in an eligible immigrant or non-immigrant status.

Enrollment Requirements

- Minimum 2 – undergraduate or graduate courses

Application Requirements

- Commitment to enhancing community welfare across academic, professional, social, or political spheres.

Application Form: SLU Scholarship Application

Applicant Code(s): 129

You can apply for this opportunity via the SLU Scholarship Application "SLU SCH APP." To access the application, please log in to Scholarship Manager and navigate to "My Applications." Degree and certificate-seeking students should find the SLU Scholarship Application for the current academic year. If you have already completed an application this academic year, no further action is required. The SLU Scholarship Application will reopen for the next academic year. The SLU SCH APP only displays opportunities for which you are eligible by leveraging your responses and data retrieved from CUNYfirst. So, please review the requirements carefully!

Ways to Log in:

- Scroll to the very top of [this page](#) and click the red "Apply Now" button, followed by "Student Login" **OR**
- Navigate back to the [homepage](#) and select "Student Login"

Awards

1. How much does this scholarship pay in tuition and fees?

This scholarship provides financial support of up to:

- **8-credits undergraduate for qualified tuition only at the NYS Resident Rate**
- **6-credits graduate for qualified tuition only at the NYS Resident Rate**

2. How long will I receive this scholarship?

The Solidarity Scholarship terminates after it has been disbursed for two courses. Depending on the awardee's enrollment plan, the scholarship could end within the academic year (fall to spring) or span across academic years (spring to fall).

There may be up to 2 award installments

3. Can this scholarship pay other educational costs?

No. This scholarship cannot cover other educational expenses beyond tuition and fees.

4. Can I receive gift aid from other sources if I am awarded this scholarship?

No. This scholarship will be reduced/canceled if an awardee prefers to use other non-refundable employer benefits/scholarships/financial aid towards part/all their tuition. Awardees are not entitled to the difference between the original scholarship offer and the modified one. Those funds are considered "unused" and will NOT be carried over to additional semester(s), academic years, programs, course costs, or other educational expenses. If you believe there will be a conflict, please discuss this with a scholarship administrator by contacting: scholarships@slu.cuny.edu. Questions about Financial Aid should be directed to financialaid@slu.cuny.edu or (212) 817-7460.

5. Can I receive a refund from this scholarship if it pays more than what I owe?

No. This scholarship will be reduced/canceled if an awardee prefers to use other non-refundable employer benefits/scholarships/financial aid towards part/all their tuition. If you believe there will be a conflict, please discuss this with a scholarship administrator by contacting: Scholarships@slu.cuny.edu.

Cancelations

1. Is this scholarship canceled if I drop or withdraw from courses?

Scholarship recipients are encouraged to consider all factors before deciding to drop or withdraw from their courses. A SLU Scholarship is an investment in our students, and we encourage recipients to take their studies seriously. Awardees who drop or withdraw may have their scholarship revoked, so we advise caution when taking such action.

For this scholarship to disburse, awardees must be enrolled in a minimum of 3 credits by the University census date.

Withdraw Drop (WD): You dropped courses and are now below 3-credits, as of the University census date.

- **Action: The scholarship for the current term will be canceled, and you will be responsible for any outstanding tuition. If the scholarship is recurring, future scholarship awards will also be canceled.**

Withdrawal (W, WU, WA, WN): You withdrew from courses after the University census date and are now below 3-credits of active enrollment.

- **Action: Future scholarship payments will be canceled.**

2. What if I Withdraw Drop (WD) from courses but still maintain minimum enrollment?

As long as you maintain the required minimum enrollment, your scholarship will be disbursed. However, the amount may be adjusted to cover tuition costs. Please note that scholarships have a fixed allocation or a set number of disbursement installments. If any portion of your scholarship was applied toward tuition for dropped courses, it will still count toward your total allocation or as a completed installment. SLU will not increase the scholarship amount or extend the number of installments under any circumstances.

3. Is this scholarship canceled if I take a leave of absence?

Solidarity Scholarships may be deferred to the next semester of enrollment if a Leave of Absence (LOA) or similar condition is approved by the Registrar's Office.

4. What happens if my GPA falls below the minimum requirement?

N/A

Needs-Based Scholarships

are awarded to students who demonstrate financial need that may otherwise limit their ability to pursue or continue their education. Eligibility is typically determined through a review of financial information, which may include completion of the Free Application for Federal Student Aid (FAFSA) or other documentation that reflects a student's financial circumstances. These scholarships are intended to help reduce financial barriers and support students in meeting tuition and educational expenses while completing their academic program.

In This Section:

- **Forward Scholarship (FWDS)**
- **Tuition Grant (TGRT)**

Forward Scholarship (FWDS)

Rooted in Resilience; Driven by Purpose



Forward Scholarship (FWDS)

About

Immigrants play a pivotal role in shaping diverse communities and make profound contributions to organized labor. The Forward Scholarship is dedicated to empowering immigrant students who have demonstrated resilience in overcoming personal challenges, be it financial or otherwise. We celebrate their exceptional ability to leverage these experiences into proactive initiatives aimed at enriching their workforce or community. **Importantly, applying for this scholarship does not require completion of a FAFSA.**

Award Amount

- Up to \$6,000 paid over 2-academic years.
- Covers tuition and fees for the fall, spring, and summer semesters.
- Cannot be used for other educational expenses.
- May be reduced by other gift aid.

Minimum Requirements

- Eligible immigrant (permanent resident/green card holder, asylee, or refugee); other immigrant status or otherwise undisclosed.
- New or continuing student in a degree-seeking program.

Enrollment Requirements

- Minimum 3-credits in a degree seeking program.

Renewable Requirements

- Minimum 2.5 cumulative GPA for undergraduates; 3.0 for graduates.

Application Requirements

- Essay showcasing the applicant's tangible experiences of overcoming significant challenges, highlighting their resilience and capacity to triumph over adversity. Moreover, the essay should adeptly articulate how these personal journeys can serve as catalysts for fostering positive transformations within both professional environments and communities.

Application Form: SLU Scholarship Application

Applicant Code(s): 029

You can apply for this opportunity via the SLU Scholarship Application "SLU SCH APP." To access the application, please log in to Scholarship Manager and navigate to "My Applications." Degree and certificate-seeking students should find the SLU Scholarship Application for the current academic year. If you have already completed an application this academic year, no further action is required. The SLU Scholarship Application will reopen for the next academic year. The SLU SCH APP only displays opportunities for which you are eligible by leveraging your responses and data retrieved from CUNYfirst. So, please review the requirements carefully!

Ways to Log in:

- Scroll to the very top of [this page](#) and click the red "Apply Now" button, followed by "Student Login" **OR**
- Navigate back to the [homepage](#) and select "Student Login"

CUNY Citizenship Now

[CUNY Citizenship Now](#) offers free, high-quality, and confidential immigration law services to help you and your family on your path to U.S. citizenship. Our attorneys and paralegals will assess your eligibility for legal benefits and help you apply if you qualify.

Awards

1. How much does this scholarship pay in tuition and fees?

This scholarship provides financial support of up to \$6,000 for qualified tuition and fees.

2. How long will I receive this scholarship?

The scholarship duration is up to two academic years (six consecutive semesters: fall, spring, and summer) or until the award is depleted.

There may be up to 6 award installments

3. Can this scholarship pay other educational costs?

No. This scholarship cannot cover other educational expenses beyond tuition and fees.

4. Can I receive gift aid from other sources if I am awarded this scholarship?

This scholarship will be reduced/canceled if an awardee prefers to use other non-refundable employer benefits/scholarships/financial aid towards part/all their tuition. Awardees are not entitled to the difference between the original scholarship offer and the modified one. Those funds are considered “unused” and will NOT be carried over to additional semester(s), academic years, programs, course costs, or other educational expenses. If you believe there will be a conflict, please discuss this with a scholarship administrator by contacting: Scholarships@slu.cuny.edu. Questions about Financial Aid should be directed to financialaid@slu.cuny.edu or (212) 817-7460.

5. Can I receive a refund from this scholarship if it pays more than what I owe?

No. This scholarship will be reduced/canceled if an awardee prefers to use other non-refundable employer benefits/scholarships/financial aid towards part/all their tuition. If you believe there will be a conflict, please discuss this with a scholarship administrator by contacting: Scholarships@slu.cuny.edu.

Cancelations

1. Is this scholarship canceled if I drop or withdraw from courses?

Scholarship recipients are encouraged to consider all factors before deciding to drop or withdraw from their courses. A SLU Scholarship is an investment in our students, and we encourage recipients to take their studies seriously. Awardees who drop or withdraw may have their scholarship revoked, so we advise caution when taking such action.

For this scholarship to disburse, awardees must be enrolled in a minimum of 3 credits by the University census date

Withdraw Drop (WD): You dropped courses and are now below 3-credits, as of the University census date.

- **Action: The scholarship for the current term will be canceled, and you will be responsible for any outstanding tuition. If the scholarship is recurring, future scholarship awards will also be canceled.**

Withdrawal (W, WU, WA, WN): You withdrew from courses after the University census date and are now below 3-credits of active enrollment.

- **Action: Future scholarship payments will be canceled.**

2. What if I Withdraw Drop (WD) from courses but still maintain minimum enrollment?

As long as you maintain the required minimum enrollment, your scholarship will be disbursed. However, the amount may be adjusted to cover tuition costs. Please note that scholarships have a fixed allocation or a set number of disbursement installments. If any portion of your scholarship was applied toward tuition for dropped courses, it will still count toward your total allocation or as a completed installment. SLU will not increase the scholarship amount or extend the number of installments under any circumstances.

3. Is this scholarship canceled if I take a leave of absence?

Forward Scholarships may be deferred to the next semester of enrollment if a Leave of Absence (LOA) or similar condition is approved by the Registrar's Office

4. What happens if my GPA falls below the minimum requirement?

Awardees must maintain the minimum cumulative GPA for their academic level:

- **2.5 for undergraduates**
- **3.0 for graduates**

Failure to maintain the required GPA will cause future scholarship installments to be canceled.

Your cumulative GPA is derived from all coursework taken in an academic term. Accordingly, scholarship recipients are strongly encouraged to resolve incomplete (INC) grades immediately. The system cannot make an accurate determination of your cumulative GPA with incomplete coursework. Incomplete (INC) grades that remain unresolved into the next semester, when a scholarship installment is scheduled for disbursement, will result in the award being decertified. This will lead to the cancellation of that installment as well as any future disbursements.

Tuition Grant (TGRT)

Empowering Students by Breaking Down Financial Barriers



Tuition Grant (TGRT)

About

Tuition Grants aid students who are committed to pursuing their educational goals. Since its inception in 2015, SLU has committed thousands of dollars to Tuition Grants, making college an affordable reality for individuals with imminent financial need.

Award Amount

- Up to \$3,700 for one academic year, with a maximum of \$1,850 per semester.
- Covers tuition and fees exclusively for the fall and/or spring semesters.
- May be reduced by other gift aid.
- Cannot be used for other for other educational expenses.

Minimum Requirements

- New or continuing * student in a matriculated program.
* Continuing Students: minimum 2.0 cumulative GPA for undergraduates; 3.0 for graduates.
- Demonstrable need as determined by the student's FAFSA: Without a valid FAFSA on file, you will not be considered for this opportunity. If you have not submitted a FAFSA for the current aid year, we recommend doing so now. Click here to get started. International Students w/o a Social Security Number, contact FinancialAid@slu.cuny.edu.
- United States citizen, legal resident, and individuals in an eligible immigrant or non-immigrant status.

Enrollment Requirements

- Minimum 3-credits enrolled per semester.

Renewable Requirements

- Minimum cumulative GPA 2.0 for undergraduates; 3.0 for graduates.

Application Requirements

- SLU Scholarship Application

Application Form: SLU Scholarship Application

Applicant Code(s): 029

You can apply for this opportunity via the SLU Scholarship Application "SLU SCH APP." To access the application, please log in to Scholarship Manager and navigate to "My Applications." Degree and certificate-seeking students should find the SLU Scholarship Application for the current academic year. If you have already completed an application this academic year, no further action is required. The SLU Scholarship Application will reopen for the next academic year. The SLU SCH APP only displays opportunities for which you are eligible by leveraging your responses and data retrieved from CUNYfirst. So, please review the requirements carefully!

Ways to Log in:

- Scroll to the very top of [this page](#) and click the red "Apply Now" button, followed by "Student Login" **OR**
- Navigate back to the [homepage](#) and select "Student Login"

Awards

1. How much does this scholarship pay in tuition and fees?

This scholarship provides financial support of up to \$1,850 for qualified tuition and fees per semester and up to \$3,700 for the academic year.

2. How long will I receive this scholarship?

The scholarship duration is up to one academic year or two consecutive semesters (fall to spring). Please be advised, awardees who applied for the spring will only receive one installment. Students are encouraged to re-apply each academic year if they have demonstrable need.

There is up to 2 award installments

3. Can this scholarship pay other educational costs?

No. This scholarship cannot cover other educational expenses beyond tuition and fees.

4. Can I receive gift aid from other sources if I am awarded this scholarship?

This scholarship will be reduced/canceled if an awardee prefers to use other non-refundable employer benefits/scholarships/financial aid towards part/all their tuition. Awardees are not entitled to the difference between the original scholarship offer and the modified one. Those funds are considered “unused” and will NOT be carried over to additional semester(s), academic years, programs, course costs, or other educational expenses. If you believe there will be a conflict, please discuss this with a scholarship administrator by contacting: Scholarships@slu.cuny.edu. Questions about Financial Aid should be directed to financialaid@slu.cuny.edu or (212) 817-7460.

5. Can I receive a refund from this scholarship if it pays more than what I owe?

No. This scholarship will be reduced/canceled if an awardee prefers to use other non-refundable employer benefits/scholarships/financial aid towards part/all their tuition. If you believe there will be a conflict, please discuss this with a scholarship administrator by contacting: Scholarships@slu.cuny.edu.

Cancelations

1. Is this scholarship canceled if I drop or withdraw from courses?

Scholarship recipients are encouraged to consider all factors before deciding to drop or withdraw from their courses. A SLU Scholarship is an investment in our students, and we encourage recipients to take their studies seriously. Awardees who drop or withdraw may have their scholarship revoked, so we advise caution when taking such action.

For this scholarship to disburse, awardees must be enrolled in a minimum of 3 credits by the University census date.

Withdraw Drop (WD): You dropped courses and are now below 3-credits, as of the University census date.

- **Action: The scholarship for the current term will be canceled, and you will be responsible for any outstanding tuition. If the scholarship is recurring, future scholarship awards will also be canceled.**

Withdrawal (W, WU, WA, WN): You withdrew from courses after the University census date and are now below 3-credits of active enrollment.

- **Action: Future scholarship payments will be canceled.**

2. What if I Withdraw Drop (WD) from courses but still maintain minimum enrollment?

As long as you maintain the required minimum enrollment, your scholarship will be disbursed. However, the amount may be adjusted to cover tuition costs. Please note that scholarships have a fixed allocation or a set number of disbursement installments. If any portion of your scholarship was applied toward tuition for dropped courses, it will still count toward your total allocation or as a completed installment. SLU will not increase the scholarship amount or extend the number of installments under any circumstances.

3. Is this scholarship canceled if I take a leave of absence?

Tuition Grants may be deferred to the next semester of enrollment within the same academic year (fall to spring) if a Leave of Absence (LOA) or similar condition is approved by the Registrar's Office. Tuition Grants cannot be deferred across academic years (spring to fall). Students are encouraged to re-apply each academic year if they have demonstrable need.

4. What happens if my GPA falls below the minimum requirement?

Awardees must maintain the minimum cumulative GPA for their academic level:

- **2.0 for undergraduates**
- **3.0 for graduates**

Failure to maintain the required GPA will cause future scholarship installments to be canceled.

Your cumulative GPA is derived from all coursework taken in an academic term. Accordingly, scholarship recipients are strongly encouraged to resolve incomplete (INC) grades immediately. The system cannot make an accurate determination of your cumulative GPA with incomplete coursework. Incomplete (INC) grades that remain unresolved into the next semester, when a scholarship installment is scheduled for disbursement, will result in the award being decertified. This will lead to the cancellation of that installment as well as any future disbursements.

Prior Balance

Intervention Programs

are designed to assist students who have an outstanding balance from a prior academic term that may prevent them from registering for future coursework. These awards help reduce or resolve eligible prior term balances so that students can restore their enrollment eligibility and continue their academic progress. Eligibility and award amounts may be determined based on institutional criteria, a review of the student's account status, and the availability of program funding.

In This Section:

- **Persistence Grant (PRSG)**
- **Balance Assistance Grant (BALA)**

Balance Assistance Grant (BALA)



Balance Assistance Grant (BALA)

About

The Balance Assistance Grant is designed to offer relief to degree or certificate students with strong academic performance and outstanding tuition balances of \$500 or less. This is a one-time, automatic grant awarded to students on a budget available basis.

Award Amount

- Up to \$500 automatically applied to tuition and fees for the fall, spring, or summer semesters.
- May be reduced by other gift aid.
- Cannot be used for other for other educational expenses.
- The number of students supported by this grant is subject to fund availability.

Minimum Requirements

- GPA of 3.0 or higher. First semester students without a cumulative GPA may NOT be eligible.
- Student must have a tuition balance of \$500 or less at the time of consideration. Students with tuition amounts assigned to a collection agency or subjected to write-off are NOT eligible.
- Must be enrolled in a degree or certificate program at CUNY-SLU. Non-degree students and those who are not continuing their enrollment may NOT be eligible.
- Applicants should have completed the Free Application for Federal Student Aid (FAFSA) for the corresponding academic year during which tuition was billed AND have exhausted all federal/state aid options.
- United States citizen, legal resident, and individuals in an eligible immigrant or non-immigrant status.

Enrollment Requirements

- Must be continuing their degree or certificate program at CUNY-SLU.

Application Requirements

- N/A

Application Form : N/A

Applicant Code(s): 029

**** NO APPLICATION IS REQUIRED ****

The selection process for this opportunity does not require a formal application. Balance Assistance is **automatically awarded** to students with the highest GPA who are enrolled in a degree or certificate program and have a current or prior tuition balance of \$500 at the time of consideration. Awards are granted on a budget-available basis until the funds are exhausted. Please note that meeting the minimum criteria does not guarantee receipt of Balance Assistance. Selections are based on ranking and fund availability.

Awards

1. How much does this scholarship pay in tuition and fees?

This scholarship provides financial support of up to \$500 for qualified tuition and fees.

2. How long will I receive this scholarship?

This award is a one-time grant paid to a current or prior balance.

There is up to 1 award installment

3. Can this scholarship pay other educational costs?

No. This scholarship cannot cover other educational expenses beyond tuition and fees.

4. Can I receive gift aid from other sources if I am awarded this scholarship?

This scholarship will be reduced/canceled if an awardee prefers to use other non-refundable employer benefits/scholarships/financial aid towards part/all their tuition. Awardees are not entitled to the difference between the original scholarship offer and the modified one. Those funds are considered “unused” and will NOT be carried over to additional semester(s), academic years, programs, course costs, or other educational expenses. If you believe there will be a conflict, please discuss this with a scholarship administrator by contacting: Scholarships@slu.cuny.edu. Questions about Financial Aid should be directed to financialaid@slu.cuny.edu or (212) 817-7460.

5. Can I receive a refund from this scholarship if it pays more than what I owe?

No. This scholarship will be reduced/canceled if an awardee prefers to use other non-refundable employer benefits/scholarships/financial aid towards part/all their tuition. If you believe there will be a conflict, please discuss this with a scholarship administrator by contacting: scholarships@slu.cuny.edu.

Cancelations

1. Is this scholarship canceled if I drop or withdraw from courses?

Scholarship recipients are encouraged to consider all factors before deciding to drop or withdraw from their courses. A SLU Scholarship is an investment in our students, and we encourage recipients to take their studies seriously. Awardees who drop or withdraw may have their scholarship revoked, so we advise caution when taking such action.

For this scholarship to disburse, awardees must be enrolled in a minimum of 3 credits by the University census date.

Withdraw Drop (WD): You dropped courses and are now below 3-credits, as of the University census date.

- **Action: The scholarship for the current term will be canceled, and you will be responsible for any outstanding tuition. If the scholarship is recurring, future scholarship awards will also be canceled.**

Withdrawal (W, WU, WA, WN): You withdrew from courses after the University census date and are now below 3-credits of active enrollment.

- **Action: Future scholarship payments will be canceled.**

2. What if I Withdraw Drop (WD) from courses but still maintain minimum enrollment?

As long as you maintain the required minimum enrollment, your scholarship will be disbursed. However, the amount may be adjusted to cover tuition costs. Please note that scholarships have a fixed allocation or a set number of disbursement installments. If any portion of your scholarship was applied toward tuition for dropped courses, it will still count toward your total allocation or as a completed installment. SLU will not increase the scholarship amount or extend the number of installments under any circumstances.

3. Is this scholarship canceled if I take a leave of absence?

While Balance Assistance Grants can be paid to a current or prior balance, the awardee must be enrolled in the current academic term. Therefore, a leave of absence is not permitted.

4. What happens if my GPA falls below the minimum requirement?

You would not be eligible for the Balance Assistance Grant if you did not meet the minimum GPA.

Persistence Grant (PRSG)

Supporting Student Success by Improving Movement Towards Degree Completion



Persistence Grant (PRSG)

About

Persistence is a one-time grant to support students who have exhausted all other financing options or experienced extreme hardship. Persistence Grants help students manage their past-due tuition and keep them on track to continue their studies at SLU. Potential candidates will receive an invitation to apply when applications are available.

Award Amount

- Up to \$1,500 towards tuition and fees paid to a past-due semester.
- May be reduced by other gift aid.
- Cannot used for other for other educational expenses.

Minimum Requirements

- Continuing enrollment in a certificate or degree-seeking program.
- Minimum GPA requirement of 2.0 for undergraduate applicants and 3.0 for graduate applicants.
- Prior balance from a previous semester that is not in collections or written off.
- United States citizen, legal resident, and individuals in an eligible immigrant or non-immigrant status.

Important: Prior term tuition with a balance of \$0 is not grant eligible, regardless of hardship status, even if the student has settled the account after a Persistence application was submitted. Additionally, tuition due for the current academic term is not grant eligible.

Enrollment Requirements

- Applicants must be continuing in a degree or certificate program at SLU and register for courses in the upcoming semester.

Application Requirements

- Demonstrated short-term economic hardship.
- Advisor approved enrollment plan.


Application: Persistence Grant Application

Applicant Code(s): 029

You can apply for this opportunity via the Persistence Grant Application "PRSG APP." To access the application, please log in to Scholarship Manager and navigate to "My Applications." Please note that the PRSG APP will only be visible in the Applicant Portal if you meet the minimum eligibility requirements. We encourage you to review all eligibility criteria beforehand.

Ways to Log in:

- Scroll to the very top of [this page](#) and click the red "Apply Now" button, followed by "Student Login" **OR**
- Navigate back to the [homepage](#) and select "Student Login"

| Important Persistence Grant Information | | | | | | | | | | | | | | | | | |
|---|--|--------------------------------|----------|-----------------------|-------|---------------------|-------|-------------------|-------|-----------------|------|-------------------|-----------------|---|--|---|--|
|  | <p>Persistence Grant offers will be withdrawn if the awardee does not:</p> <ul style="list-style-type: none"> • Continue at SLU in a certificate or degree-seeking program AND • Enroll in a minimum of 3 credits for the current academic term. | | | | | | | | | | | | | | | | |
| | <p>If the Persistence Grant doesn't cover your prior balance in full:</p> <ul style="list-style-type: none"> • Awardees must pay the remaining amount not covered by the grant to clear any "past-due" holds blocking new registration ↓ | | | | | | | | | | | | | | | | |
| <p>** SAMPLE BILL **</p> | | | | | | | | | | | | | | | | | |
| <p>SAMMY STUDENT 1234567</p> <p>24 SPRING</p> <table style="width: 100%; border-collapse: collapse;"> <tr> <td style="width: 80%;">Graduate Degree Resident</td> <td style="text-align: right;">2,820.00</td> </tr> <tr> <td>Consolidated Fee.....</td> <td style="text-align: right;">15.00</td> </tr> <tr> <td>Technology Fee.....</td> <td style="text-align: right;">62.50</td> </tr> <tr> <td>Activity Fee.....</td> <td style="text-align: right;">23.55</td> </tr> <tr> <td>Senate Fee.....</td> <td style="text-align: right;">1.45</td> </tr> <tr> <td>TOTAL.....</td> <td style="text-align: right;">2,922.50</td> </tr> <tr> <td colspan="2" style="padding-top: 10px;"> <p><i>Anticipated Persistence Grant.....-1,500.00</i></p> </td> </tr> <tr> <td colspan="2" style="padding-top: 10px;"> <p>→ DUE FROM STUDENT.....1,422.50 ←</p> </td> </tr> </table> | | Graduate Degree Resident | 2,820.00 | Consolidated Fee..... | 15.00 | Technology Fee..... | 62.50 | Activity Fee..... | 23.55 | Senate Fee..... | 1.45 | TOTAL..... | 2,922.50 | <p><i>Anticipated Persistence Grant.....-1,500.00</i></p> | | <p>→ DUE FROM STUDENT.....1,422.50 ←</p> | |
| Graduate Degree Resident | 2,820.00 | | | | | | | | | | | | | | | | |
| Consolidated Fee..... | 15.00 | | | | | | | | | | | | | | | | |
| Technology Fee..... | 62.50 | | | | | | | | | | | | | | | | |
| Activity Fee..... | 23.55 | | | | | | | | | | | | | | | | |
| Senate Fee..... | 1.45 | | | | | | | | | | | | | | | | |
| TOTAL..... | 2,922.50 | | | | | | | | | | | | | | | | |
| <p><i>Anticipated Persistence Grant.....-1,500.00</i></p> | | | | | | | | | | | | | | | | | |
| <p>→ DUE FROM STUDENT.....1,422.50 ←</p> | | | | | | | | | | | | | | | | | |

Awards

1. How much does this scholarship pay in tuition and fees?

This scholarship provides financial support of up to \$1,500 towards qualified tuition and fees.

2. How long will I receive this scholarship?

This award is a one-time hardship grant paid to a prior balance.

There is up to 1 award installment.

3. Can this scholarship pay other educational costs?

No. This scholarship cannot cover other educational expenses beyond tuition and fees.

4. Can I receive gift aid from other sources if I am awarded this scholarship?

This scholarship will be reduced/canceled if an awardee prefers to use other non-refundable employer benefits/scholarships/financial aid towards part/all their tuition. Awardees are not entitled to the difference between the original scholarship offer and the modified one. Those funds are considered “unused” and will NOT be carried over to additional semester(s), academic years, programs, course costs, or other educational expenses. If you believe there will be a conflict, please discuss this with a scholarship administrator by contacting: scholarships@slu.cuny.edu. Questions about Financial Aid should be directed to financialaid@slu.cuny.edu or (212) 817-7460.

5. Can I receive a refund from this scholarship if it pays more than what I owe?

No. This scholarship will be reduced/canceled if an awardee prefers to use other non-refundable employer benefits/scholarships/financial aid towards part/all their tuition. If you believe there will be a conflict, please discuss this with a scholarship administrator by contacting: Scholarships@slu.cuny.edu.

Cancelations

1. Is this scholarship canceled if I drop or withdraw from courses?

Scholarship recipients are encouraged to consider all factors before deciding to drop or withdraw from their courses. A SLU Scholarship is an investment in our students, and we encourage recipients to take their studies seriously. Awardees who drop or withdraw may have their scholarship revoked, so we advise caution when taking such action.

For this scholarship to disburse, awardees must be enrolled in a minimum of 3 credits by the University census date.

Withdraw Drop (WD): You dropped courses and are now below 3-credits, as of the University census date.

- **Action: The scholarship for the current term will be canceled, and you will be responsible for any outstanding tuition. If the scholarship is recurring, future scholarship awards will also be canceled.**

Withdrawal (W, WU, WA, WN): You withdrew from courses after the University census date and are now below 3-credits of active enrollment.

- Action: N/A

2. What if I Withdraw Drop (WD) from courses but still maintain minimum enrollment?

As long as you maintain the required minimum enrollment, your scholarship will be disbursed. However, the amount may be adjusted to cover tuition costs. Please note that scholarships have a fixed allocation or a set number of disbursement installments. If any portion of your scholarship was applied toward tuition for dropped courses, it will still count toward your total allocation or as a completed installment. SLU will not increase the scholarship amount or extend the number of installments under any circumstances.

3. Is this scholarship canceled if I take a leave of absence?

While Persistence Grants are paid to a prior semester, the awardee must be enrolled in the current academic term. Therefore, a leave of absence is not permitted.

4. What happens if my GPA falls below the minimum requirement?

You would not be eligible to apply for a Persistence Grant if you did not meet the minimum GPA for your academic career (undergraduate minimum = 2.0; graduate minimum = 3.0).

Union and Employer Scholarships

are funded through endowments and sponsorships established by labor unions, employers, and institutional partners to support students pursuing higher education. These scholarships often recognize individuals whose professional work or career goals are connected to labor, workforce development, or public service. Eligibility and award criteria may include verification of union membership, employment affiliation, or participation in a partner organization, and may be guided by the terms established by the sponsoring entity.

In This Section:

- Lillian Roberts Endowed Scholarship (LILR)
- Mayor's Graduate Scholarship Program (MGSP)
- Mayor's Undergraduate Scholarship Program (MUSP)
- Public Service Scholarship (PSVC)
- Robin Gillespie Scholarship for Labor Relations (RGLS)
- Teacher's Scholarship for Community Leadership (TSCH)

Lillian Roberts Endowed Scholarship (LILR)

Advancing Equity Driven Leadership



Lillian Roberts Endowed Scholarship (LILR)

About

The Lillian Roberts Endowed Scholarship aims to provide financial assistance to eligible DC37 and AFSCME members or their children who are passionate about fostering gender equality and racial justice. This scholarship not only aims to ease the financial burden of higher education but also encourages students to actively engage in community activities, social groups, or organizations that work towards promoting and supporting these vital causes.

Award Amount

- \$1,250 towards tuition, fees, and other college costs for the fall semester.

Minimum Requirements

- Active members of DC37/AFSCME or the child of an active DC37/AFSCME member.
- Enrolled in an undergraduate or graduate program at CUNY-SLU for the fall semester.
- Continuing students: minimum GPA requirement of 3.0 for graduates; 2.5 for undergraduates.

Enrollment Requirements

- Minimum 3-credits for the fall semester.

Application Requirements

- Thematic essay that demonstrates a commitment to promoting gender equality and racial justice.
- Submission of one letter of recommendation from an employer, supervisor, or union leader.

Application Form: SLU Scholarship Application

Applicant Codes: 009

You can apply for this opportunity via the SLU Scholarship Application "SLU SCH APP." To access the application, please log in to Scholarship Manager and navigate to "My Applications." Degree and certificate-seeking students should find the SLU Scholarship Application for the current academic year. If you have already completed an application this academic year, no further action is required. The SLU Scholarship Application will reopen for the next academic year. The SLU SCH APP only displays opportunities for which you are eligible by leveraging your responses and data retrieved from CUNYfirst. So, please review the requirements carefully!

Ways to Log in:

- Scroll to the very top of [this page](#) and click the red "Apply Now" button, followed by "Student Login" **OR**
- Navigate back to the [homepage](#) and select "Student Login"

1. How much does this scholarship pay in tuition and fees?

This scholarship provides financial support of up to \$1,250 for qualified tuition and fees.

2. How long will I receive this scholarship?

The Lillian Robert's Scholarship is a one-time award paid the fall semester.

There is up to 1 award installment.

3. Can this scholarship pay other educational costs?

Yes. This scholarship can cover other educational expenses beyond tuition and fees. Initially, it's applied to tuition and fees, and any surplus is refunded to the awardee. Students can use this refund for textbooks, transportation, and other college-related expenses.

4. Can I receive gift aid from other sources if I am awarded this scholarship?

Yes. This scholarship will not be reduced or canceled if an awardee chooses to utilize other non-refundable employer benefits, scholarships, or financial aid to cover part or all their tuition. Questions about Financial Aid should be directed to financialaid@slu.cuny.edu or (212) 817-7460.

5. Can I receive a refund from this scholarship if it pays more than what I owe?

Yes. This scholarship can cover other educational expenses beyond tuition and fees. Initially, it's applied to tuition and fees, and any surplus is refunded to the awardee. Students can use this refund for textbooks, transportation, and other college-related expenses. However, it may be modified if you drop your courses.

Cancelations

1. Is this scholarship canceled if I drop or withdraw from courses?

Scholarship recipients are encouraged to consider all factors before deciding to drop or withdraw from their courses. A SLU Scholarship is an investment in our students, and we encourage recipients to take their studies seriously. Awardees who drop or withdraw may have their scholarship revoked, so we advise caution when taking such action.

For this scholarship to disburse, awardees must be enrolled in a minimum of 3 credits by the University census date.

Withdraw Drop (WD): You dropped courses and are now below 3-credits, as of the University census date.

- **Action: The scholarship for the current term will be canceled, and you will be responsible for any outstanding tuition. If the scholarship is recurring, future scholarship awards will also be canceled.**

Withdrawal (W, WU, WA, WN): You withdrew from courses after the University census date and are now below 3-credits of active enrollment.

- **Action: Future scholarship payments will be canceled.**

2. What if I Withdraw Drop (WD) from courses but still maintain minimum enrollment?

As long as you maintain the required minimum enrollment, your scholarship will be disbursed. However, the amount may be adjusted to cover tuition costs. Please note that scholarships have a fixed allocation or a set number of disbursement installments. If any portion of your scholarship was applied toward tuition for dropped courses, it will still count toward your total allocation or as a completed installment. SLU will not increase the scholarship amount or extend the number of installments under any circumstances.

3. Is this scholarship canceled if I take a leave of absence?

Lillian Roberts Endowed Scholarship may be deferred to the next semester of enrollment within the same academic year (fall to spring) if a Leave of Absence (LOA) or similar condition is approved by the Registrar's Office. Without this approval, the scholarship will not be reinstated upon return.

4. What happens if my GPA falls below the minimum requirement?

N/A

Mayor's Graduate Scholarship Program (MGSP)



Mayor's Graduate Scholarship Program (MGSP)

About

The Mayor's Graduate Scholarship Program (MGSP) provides full-time New York City government employees the opportunity to continue their education through graduate study. The Department of Citywide Administrative Services administers this program, and the School of Labor and Urban Studies will award scholarships on a competitive basis.

Award Amount

- Award of up to \$1,500 per semester / \$3,000 for the academic year.
- Covers tuition and fees for two consecutive semesters (fall to spring).
- May be reduced by other gift aid received.
- Cannot be used for other for other educational expenses.

Minimum Requirements

- Employment with a New York City Government Agency.
- Submission of the completed MGSP Application, available [here](#).
- Newly admitted graduate student (fall semester) and matriculated in one of the following programs:
 - MA in Labor Studies
 - MA in Urban Studies
 - Advanced Certificates: Health Care Policy and Administration, Labor Relations, Labor Studies, Community Leadership, Public Administration, Public Policy, or Workplace Democracy and Community Ownership.
- United States citizen, legal resident, and individuals in an eligible immigrant or non-immigrant status.

Enrollment Requirements

- Minimum half-time enrollment (6 credits).

Renewable Requirements

- GPA of 3.0 or higher

Application Requirements

- External Application (DCAS)

Application Form: Mayor's Graduate Scholarship Program Application

Applicant Code(s): 199

This is an **INTEGRATED** opportunity, indicating that the organization has partnered with the School of Labor and Urban Studies but retains their right to host the scholarship application. **You will not be able to apply via the Scholarship Manager System.** Please click the black "Apply Now" button to be redirected to the organization's website and follow their instructions to complete the application process.

Additional Information

- First, apply for admission to the CUNY School of Labor and Urban Studies
- Next, complete the Mayor's Graduate Scholarship Program Application and submit to Department of Citywide Administrative Services (DCAS) by the deadline.
- For more information or application materials, visit their website or call (212) 669-4163.

1. How much does this scholarship pay in tuition and fees?

This scholarship provides financial support of up to \$1,500 for qualified tuition and fees per semester \$3,000 for the academic year

2. How long will I receive this scholarship?

The scholarship duration is up to one academic year or two consecutive semesters (fall to spring).

There is up to 2 award installments

3. Can this scholarship pay other educational costs?

No. This scholarship cannot cover other educational expenses beyond tuition and fees.

4. Can I receive gift aid from other sources if I am awarded this scholarship?

This scholarship will be reduced/canceled if an awardee prefers to use other non-refundable employer benefits/scholarships/financial aid towards part/all their tuition. Awardees are not entitled to the difference between the original scholarship offer and the modified one. Those funds are considered “unused” and will NOT be carried over to additional semester(s), academic years, programs, course costs, or other educational expenses. If you believe there will be a conflict, please discuss this with a scholarship administrator by contacting: scholarships@slu.cuny.edu. Questions about Financial Aid should be directed to financialaid@slu.cuny.edu or (212) 817-7460.

5. Can I receive a refund from this scholarship if it pays more than what I owe?

No. This scholarship will be reduced/canceled if an awardee prefers to use other non-refundable employer benefits/scholarships/financial aid towards part/all their tuition. If you believe there will be a conflict, please discuss this with a scholarship administrator by contacting: Scholarships@slu.cuny.edu.

Cancelations

1. Is this scholarship canceled if I drop or withdraw from courses?

Scholarship recipients are encouraged to consider all factors before deciding to drop or withdraw from their courses. A SLU Scholarship is an investment in our students, and we encourage recipients to take their studies seriously. Awardees who drop or withdraw may have their scholarship revoked, so we advise caution when taking such action.

For this scholarship to disburse, awardees must be enrolled in a minimum of 6 credits by the University census date.

Withdraw Drop (WD): You dropped courses and are now below 6-credits, as of the University census date.

- **Action: The scholarship for the current term will be canceled, and you will be responsible for any outstanding tuition. If the scholarship is recurring, future scholarship awards will also be canceled.**

Withdrawal (W, WU, WA, WN): You withdrew from courses after the University census date and are now below 6-credits of active enrollment.

- **Action: Future scholarship payments will be canceled.**

2. What if I Withdraw Drop (WD) from courses but still maintain minimum enrollment?

As long as you maintain the required minimum enrollment, your scholarship will be disbursed. However, the amount may be adjusted to cover tuition costs. Please note that scholarships have a fixed allocation or a set number of disbursement installments. If any portion of your scholarship was applied toward tuition for dropped courses, it will still count toward your total allocation or as a completed installment. SLU will not increase the scholarship amount or extend the number of installments under any circumstances.

3. Is this scholarship canceled if I take a leave of absence?

MGSP may be deferred to the next semester of enrollment (fall to spring) if a Leave of Absence (LOA) or similar condition is approved by the Registrar's Office. Unfortunately, MGSP cannot be deferred across academic years (spring to fall). Students may need to re-apply with DCAS.

4. What happens if my GPA falls below the minimum requirement?

Awardees must maintain the minimum cumulative GPA for their academic level:

3.0 for graduate students.

Failure to maintain the required GPA will cause future scholarship installments to be canceled.

Your cumulative GPA is derived from all coursework taken in an academic term. Accordingly, scholarship recipients are strongly encouraged to resolve incomplete (INC) grades immediately. The system cannot make an accurate determination of your cumulative GPA with incomplete coursework. Incomplete (INC) grades that remain unresolved into the next semester, when a scholarship installment is scheduled for disbursement, will result in the award being decertified. This will lead to the cancellation of that installment as well as any future disbursements.

Mayor's **Undergraduate** Scholarship Program (M**U**SP)



Mayor's Undergraduate Scholarship Program (MUSP)

About

The **Mayor's Undergraduate Scholarship Program (MUSP)** provides full-time New York City government employees the opportunity to continue their education through graduate study. The Department of Citywide Administrative Services administers this program, and the School of Labor and Urban Studies will award scholarships on a competitive basis.

Award Amount

- Award of up to \$1,500 per semester / \$3,000 for the academic year.
- Covers tuition and fees for two consecutive semesters (fall to spring).
- May be reduced by other gift aid received.
- Cannot be used for other for other educational expenses.

Minimum Requirements

- Employment with a New York City Government Agency.
 - Submission of the completed MUSP Application, available [here](#).
 - Newly admitted undergraduate student (fall semester) and matriculated in one of the following programs:
 - BA Labor Studies
 - BA Urban & Community Studies
 - Certificate in Labor Studies
 - Certificate in Labor Relations*
 - Certificate in Community Leadership
 - Certificate in Public Administration & Public Policy
 - Certificate in Healthcare Leadership & Advocacy
- * DC37 members may be ineligible to apply for MUSP if they are participating in the DC37 Labor Leaders Partnership Program Agreement between SLU and the DC37 Education Fund.*
- United States citizen, legal resident, and individuals in an eligible immigrant or non-immigrant status.

Enrollment Requirements

- Minimum 3-credits

Renewable Requirements

- GPA of 2.5 or higher

Application Requirements

- External Application (DCAS)

Application Form: Mayor's Undergraduate Scholarship

Applicant Code(s): 199

This is an **INTEGRATED** opportunity, indicating that the organization has partnered with the School of Labor and Urban Studies but retains their right to host the scholarship application. **You will not be able to apply via the Scholarship Manager System.** Please click the black "Apply Now" button to be redirected to the organization's website and follow their instructions to complete the application process.

Additional Information

- First, apply for admission to the CUNY School of Labor and Urban Studies
- Next, complete the Mayor's Undergraduate Scholarship and submit to Department of Citywide Administrative Services (DCAS) by the deadline.
- For more information or application materials, visit their website or call (212) 669-4163.

1. How much does this scholarship pay in tuition and fees?

This scholarship provides financial support of up to \$1,500 for qualified tuition and fees per semester \$3,000 for the academic year

2. How long will I receive this scholarship?

The scholarship duration is up to one academic year or two consecutive semesters (fall to spring).

There is up to 2 award installments

3. Can this scholarship pay other educational costs?

No. This scholarship cannot cover other educational expenses beyond tuition and fees.

4. Can I receive gift aid from other sources if I am awarded this scholarship?

This scholarship will be reduced/canceled if an awardee prefers to use other non-refundable employer benefits/scholarships/financial aid towards part/all their tuition. Awardees are not entitled to the difference between the original scholarship offer and the modified one. Those funds are considered “unused” and will NOT be carried over to additional semester(s), academic years, programs, course costs, or other educational expenses. If you believe there will be a conflict, please discuss this with a scholarship administrator by contacting: scholarships@slu.cuny.edu. Questions about Financial Aid should be directed to financialaid@slu.cuny.edu or (212) 817-7460.

5. Can I receive a refund from this scholarship if it pays more than what I owe?

No. This scholarship will be reduced/canceled if an awardee prefers to use other non-refundable employer benefits/scholarships/financial aid towards part/all their tuition. If you believe there will be a conflict, please discuss this with a scholarship administrator by contacting: scholarships@slu.cuny.edu.

Cancelations

1. Is this scholarship canceled if I drop or withdraw from courses?

Scholarship recipients are encouraged to consider all factors before deciding to drop or withdraw from their courses. A SLU Scholarship is an investment in our students, and we encourage recipients to take their studies seriously. Awardees who drop or withdraw may have their scholarship revoked, so we advise caution when taking such action.

For this scholarship to disburse, awardees must be enrolled in a minimum of 3 credits by the University census date.

Withdraw Drop (WD): You dropped courses and are now below 3-credits, as of the University census date.

- **Action: The scholarship for the current term will be canceled, and you will be responsible for any outstanding tuition. If the scholarship is recurring, future scholarship awards will also be canceled.**

Withdrawal (W, WU, WA, WN): You withdrew from courses after the University census date and are now below 6-credits of active enrollment.

- **Action: Future scholarship payments will be canceled.**

2. What if I Withdraw Drop (WD) from courses but still maintain minimum enrollment?

As long as you maintain the required minimum enrollment, your scholarship will be disbursed. However, the amount may be adjusted to cover tuition costs. Please note that scholarships have a fixed allocation or a set number of disbursement installments. If any portion of your scholarship was applied toward tuition for dropped courses, it will still count toward your total allocation or as a completed installment. SLU will not increase the scholarship amount or extend the number of installments under any circumstances.

3. Is this scholarship canceled if I take a leave of absence?

MGSP may be deferred to the next semester of enrollment (fall to spring) if a Leave of Absence (LOA) or similar condition is approved by the Registrar's Office. Unfortunately, MUSP cannot be deferred across academic years (spring to fall). Students may need to re-apply with DCAS.

4. What happens if my GPA falls below the minimum requirement?

Awardees must maintain the minimum cumulative GPA for their academic level:

- 2.5 for undergraduate students.

Failure to maintain the required GPA will cause future scholarship installments to be canceled.

Your cumulative GPA is derived from all coursework taken in an academic term. Accordingly, scholarship recipients are strongly encouraged to resolve incomplete (INC) grades immediately. The system cannot make an accurate determination of your cumulative GPA with incomplete coursework. Incomplete (INC) grades that remain unresolved into the next semester, when a scholarship installment is scheduled for disbursement, will result in the award being decertified. This will lead to the cancellation of that installment as well as any future disbursements.

Public Service Scholarship (PSVC)

Supporting Leaders of Tomorrow by Expanding Educational Opportunities Today



Public Service Scholarship (PSVC)

About

The Public Service and Social Justice Scholarship provides tuition support for students who are committed to social change through a career in public service.

Award Amount

- Up to \$6,000 per academic year; maximum of \$3,000 per semester.
- Covers tuition and fees for four consecutive semesters (fall/spring).
- May be reduced by other gift aid received.
- Cannot be used for other educational expenses.

Minimum Requirements

- Newly admitted as a degree-seeking BA or MA student.
- Employed in the public sector, advocacy group, community-based organization, labor union, or non-profit; public sector volunteers are also eligible to apply.
- United States citizen, legal resident, and individuals in an eligible immigrant or non-immigrant status.

Enrollment Requirements

- Minimum 3-credits enrolled per semester.
- 6-credits is recommended.

Renewable Requirements

- Minimum GPA 3.0 graduate students; 2.5 for undergraduates.

Application Requirements

- Professional resume.
- Essay demonstrating the applicant's dedication to public service or social justice.

- **One professional reference** from an employer or manager, preferably one who directly supervised your public service work. The reference must be submitted using an official email address from a .gov, .edu, or another recognized institutional domain (e.g., .org, .mil, or a verified nonprofit/agency domain)

Application Form: SLU Scholarship Application

Applicant Code(s): 129

You can apply for this opportunity via the SLU Scholarship Application "SLU SCH APP." To access the application, please log in to Scholarship Manager and navigate to "My Applications." Degree and certificate-seeking students should find the SLU Scholarship Application for the current academic year. If you have already completed an application this academic year, no further action is required. The SLU Scholarship Application will reopen for the next academic year. The SLU SCH APP only displays opportunities for which you are eligible by leveraging your responses and data retrieved from CUNYfirst. So, please review the requirements carefully!

Ways to Log in:

- Scroll to the very top of [this page](#) and click the red "Apply Now" button, followed by "Student Login" **OR**
- Navigate back to the [homepage](#) and select "Student Login"

1. How much does this scholarship pay in tuition and fees?

This scholarship provides financial support of up to \$3,000 for qualified tuition and fees per semester and up to \$6,000 for the academic year

2. How long will I receive this scholarship?

The scholarship duration is up to two academic years or 4-consecutive semesters (fall and spring only).

There are up to 4 award installments

3. Can this scholarship pay other educational costs?

No. This scholarship cannot cover other educational expenses beyond tuition and fees.

4. Can I receive gift aid from other sources if I am awarded this scholarship?

This scholarship will be reduced/canceled if an awardee prefers to use other non-refundable employer benefits/scholarships/financial aid towards part/all their tuition. Awardees are not entitled to the difference between the original scholarship offer and the modified one. Those funds are considered “unused” and will NOT be carried over to additional semester(s), academic years, programs, course costs, or other educational expenses. If you believe there will be a conflict, please discuss this with a scholarship administrator by contacting: Scholarships@slu.cuny.edu. Questions about Financial Aid should be directed to financialaid@slu.cuny.edu or (212) 817-7460.

5. Can I receive a refund from this scholarship if it pays more than what I owe?

No. This scholarship will be reduced/canceled if an awardee prefers to use other non-refundable employer benefits/scholarships/financial aid towards part/all their tuition. If you believe there will be a conflict, please discuss this with a scholarship administrator by contacting: Scholarships@slu.cuny.edu.

Cancelations

1. Is this scholarship canceled if I drop or withdraw from courses?

Scholarship recipients are encouraged to consider all factors before deciding to drop or withdraw from their courses. A SLU Scholarship is an investment in our students, and we encourage recipients to take their studies seriously. Awardees who drop or withdraw may have their scholarship revoked, so we advise caution when taking such action.

For this scholarship to disburse, awardees must be enrolled in a minimum of 3 credits by the University census date.

Withdraw Drop (WD): You dropped courses and are now below 3-credits, as of the University census date.

- **Action: The scholarship for the current term will be canceled, and you will be responsible for any outstanding tuition. If the scholarship is recurring, future scholarship awards will also be canceled.**

Withdrawal (W, WU, WA, WN): You withdrew from courses after the University census date and are now below 3-credits of active enrollment.

- **Action: Future scholarship payments will be canceled.**

2. What if I Withdraw Drop (WD) from courses but still maintain minimum enrollment?

As long as you maintain the required minimum enrollment, your scholarship will be disbursed. However, the amount may be adjusted to cover tuition costs. Please note that scholarships have a fixed allocation or a set number of disbursement installments. If any portion of your scholarship was applied toward tuition for dropped courses, it will still count toward your total allocation or as a completed installment. SLU will not increase the scholarship amount or extend the number of installments under any circumstances.

3. Is this scholarship canceled if I take a leave of absence?

Public Service Scholarships may be deferred to the next semester of enrollment if a Leave of Absence (LOA) or similar condition is approved by the Registrar's Office.

4. What happens if my GPA falls below the minimum requirement?

Awardees must maintain the minimum cumulative GPA for their academic level:

- **2.5 for undergraduates**
- **3.0 for graduate students**

Failure to maintain the required GPA will cause future scholarship installments to be canceled.

Your cumulative GPA is derived from all coursework taken in an academic term. Accordingly, scholarship recipients are strongly encouraged to resolve incomplete (INC) grades immediately. The system cannot make an accurate determination of your cumulative GPA with incomplete coursework. Incomplete (INC) grades that remain unresolved into the next semester, when a scholarship installment is scheduled for disbursement, will result in the award being decertified. This will lead to the cancellation of that installment as well as any future disbursements.

Robin Gillespie Scholarship for Labor Relations (RGLS)

Tuition Assistance for Outstanding TWU Local 100 and ATU Local 1056 Members



Robin Gillespie Scholarship for Labor Relations (RGLS)

About

The Dr. Robin Gillespie Scholarship for Labor Relations is named after Dr. Robin Gillespie, who was also a powerful advocate for improving the lives of working people. Dr. Gillespie made significant contributions to the Amalgamated Transit Union (ATU) and Transport Workers Union (TWU), most notably her work to make bus designs safer and healthier for operators and the public. Nationally, she led research and education projects at the National Science Foundation's Transportation Research Board and its Transit Cooperative Research Program (TCRP). She was the lead author of the groundbreaking 2016 TCRP report, *Bus Operator Workstation Design for Improving Occupational Health, and Safety*. This scholarship was designed to provide tuition support for TWU/ATU members who share Dr. Gillespie's commitment to education and union leadership.

Award Amount

- \$1,000 towards tuition, fees, and other educational expenses for the fall semester

Minimum Requirements

- Membership in TWU Local 100 or ATU Local 1056.
- Acceptance into the Certificate in Labor Relations or Advanced Certificate in Labor Relations program for the **fall semester**.

Enrollment Requirements

- Minimum 3-credits enrolled in the Certificate in Labor Relations or Advanced Certificate in Labor Relations for the FALL semester.

Application Requirements

- Thematic essay.
- One letter of reference from a nominating union leader.

Application Form: SLU Scholarship Application

Applicant Code(s): 009

You can apply for this opportunity via the SLU Scholarship Application "SLU SCH APP." To access the application, please log in to Scholarship Manager and navigate to "My Applications." Degree and certificate-seeking students should find the SLU Scholarship Application for the current academic year. If you have already completed an application this academic year, no further action is required. The SLU Scholarship Application will reopen for the next academic year. The SLU SCH APP only displays opportunities for which you are eligible by leveraging your responses and data retrieved from CUNYfirst. So, please review the requirements carefully!

Ways to Log in:

- Scroll to the very top of [this page](#) and click the red "Apply Now" button, followed by "Student Login" **OR**
- Navigate back to the [homepage](#) and select "Student Login"

Awards

1. How much does this scholarship pay in tuition and fees?

This scholarship provides financial support of up to \$1,000 for qualified tuition and fees.

2. How long will I receive this scholarship?

Robin Gillespie is a one-time award paid to the fall semester.

There is up to 1 award installment.

3. Can this scholarship pay other educational costs

Yes. This scholarship can cover other educational expenses beyond tuition and fees. Initially, it's applied to tuition and fees, and any surplus is refunded to the awardee. Students can use this refund for textbooks, transportation, and other college-related expenses.

4. Can I receive gift aid from other sources if I am awarded this scholarship?

Yes. This scholarship will not be reduced or canceled if an awardee chooses to utilize other non-refundable employer benefits, scholarships, or financial aid to cover part or all their tuition. Questions about Financial Aid should be directed to financialaid@slu.cuny.edu or (212) 817-7460.

5. Can I receive a refund from this scholarship if it pays more than what I owe?

Yes. This scholarship can cover other educational expenses beyond tuition and fees. Initially, it's applied to tuition and fees, and any surplus is refunded to the awardee. Students can use this refund for textbooks, transportation, and other college-related expenses. However, it may be modified if you drop your courses.

Cancelations

1. Is this scholarship canceled if I drop or withdraw from courses?

Scholarship recipients are encouraged to consider all factors before deciding to drop or withdraw from their courses. A SLU Scholarship is an investment in our students, and we encourage recipients to take their studies seriously. Awardees who drop or withdraw may have their scholarship revoked, so we advise caution when taking such action.

For this scholarship to disburse, awardees must be enrolled in a minimum of 3 credits by the University census date.

Withdraw Drop (WD): You dropped courses and are now below 3-credits, as of the University census date.

- **Action: The scholarship for the current term will be canceled, and you will be responsible for any outstanding tuition. If the scholarship is recurring, future scholarship awards will also be canceled.**

Withdrawal (W, WU, WA, WN): You withdrew from courses after the University census date and are now below 3-credits of active enrollment.

- **Action: Future scholarship payments will be canceled.**

2. What if I Withdraw Drop (WD) from courses but still maintain minimum enrollment?

As long as you maintain the required minimum enrollment, your scholarship will be disbursed. However, the amount may be adjusted to cover tuition costs. Please note that scholarships have a fixed allocation or a set number of disbursement installments. If any portion of your scholarship was applied toward tuition for dropped courses, it will still count toward your total allocation or as a completed installment. SLU will not increase the scholarship amount or extend the number of installments under any circumstances.

3. Is this scholarship canceled if I take a leave of absence?

This scholarship may be deferred to the next semester of enrollment if a Leave of Absence (LOA) or similar condition is approved by the Registrar's Office. Without this approval, the scholarship will not be reinstated upon return.

4. What happens if my GPA falls below the minimum requirement?

N/A

Teacher's Scholarship for Community Leadership (TSCH)

Motivate Your Classroom, Enrich Your Community



Automatic Selection
No Application Required

Teacher's Scholarship for Community Leadership (TSCH)

About

The Teacher's Scholarship for Community Leadership is a transformative opportunity for eligible UFT members seeking to continue their education and make a lasting impact on their classrooms and communities. This scholarship, offered in partnership with the School of Labor and Urban Studies (SLU) at the City University of New York (CUNY), aims to empower educators to enrich their teaching experiences and reshape the communities they serve.

UFT members at CUNY-SLU will complete an Advanced Certificate in Community Leadership (COML-AC). This is a comprehensive 12-credit program meticulously designed to bridge your classroom experiences with the essential tools required to become an effective catalyst for community change. Those who enroll for a minimum of 6 credits will receive an automatic \$1,500 scholarship.

To qualify for the scholarship, members are required to enroll in 6 credits each term, completing the program within two semesters. Please be aware that awards are subject to the availability of funds and will be granted on a first-come, first-serve basis. Your prompt action is encouraged to secure your opportunity.

Award Amount

- \$1,500 per semester; maximum \$3,000 for the academic year.
- Covers tuition and fees for fall and/or spring.
- May be reduced by other gift aid.
- Cannot be used for other for other educational expenses.

Minimum Requirements

- Current UFT Membership (membership verification required)
- Newly admitted to the Advanced Certificate in Community Leadership (COML-AC)
- United States citizen, legal resident, and individuals in an eligible immigrant or non-immigrant status.

Enrollment Requirements

- At least half-time (6-credits)

Renewable Requirements

- 3.0 GPA

Application Requirements

N/A

Application Form: N/A

Applicant Code: 129

**** NO APPLICATION IS REQUIRED ****

UFT members enrolling in a minimum of 6 credits in the COML-AC program will automatically be considered for the scholarship, subject to available funding. Please note that meeting the minimum criteria does not guarantee a TSCL award. Scholarships are awarded on a first-come, first-served basis during the admissions process. Unfortunately, requests for special considerations cannot be accommodated.

Awards

1. How much does this scholarship pay in tuition and fees?

This scholarship provides financial support of up to \$1,500 for qualified tuition and fees. per semester and up to \$3,000 for the academic year

2. How long will I receive this scholarship?

The scholarship duration is up to one academic year or two consecutive semesters (fall to spring).

There is up to 2 award installments

3. Can this scholarship pay other educational costs?

No. This scholarship cannot cover other educational expenses beyond tuition and fees.

4. Can I receive gift aid from other sources if I am awarded this scholarship?

This scholarship will be reduced/canceled if an awardee prefers to use other non-refundable employer benefits/scholarships/financial aid towards part/all their tuition. Awardees are not entitled to the difference between the original scholarship offer and the modified one. Those funds are considered “unused” and will NOT be carried over to additional semester(s), academic years, programs, course costs, or other educational expenses. If you believe there will be a conflict, please discuss this with a scholarship administrator by contacting: Scholarships@slu.cuny.edu. Questions about Financial Aid should be directed to financialaid@slu.cuny.edu or (212) 817-7460.

5. Can I receive a refund from this scholarship if it pays more than what I owe?

No. This scholarship will be reduced/canceled if an awardee prefers to use other non-refundable employer benefits/scholarships/financial aid towards part/all their tuition. If you believe there will be a conflict, please discuss this with a scholarship administrator by contacting: Scholarships@slu.cuny.edu.

Cancelations

1. Is this scholarship canceled if I drop or withdraw from courses?

Scholarship recipients are encouraged to consider all factors before deciding to drop or withdraw from their courses. A SLU Scholarship is an investment in our students, and we encourage recipients to take their studies seriously. Awardees who drop or withdraw may have their scholarship revoked, so we advise caution when taking such action.

For this scholarship to disburse, awardees must be enrolled in a minimum of 6 credits by the University census date.

Withdraw Drop (WD): You dropped courses and are now below 6-credits, as of the University census date.

- **Action: The scholarship for the current term will be canceled, and you will be responsible for any outstanding tuition. If the scholarship is recurring, future scholarship awards will also be canceled.**

Withdrawal (W, WU, WA, WN): You withdrew from courses after the University census date and are now below 6-credits of active enrollment.

- **Action: The scholarship for the current term will be canceled, and you will be responsible for any outstanding tuition. If the scholarship is recurring, future scholarship awards will also be canceled.**

2. What if I Withdraw Drop (WD) from courses but still maintain minimum enrollment?

As long as you maintain the required minimum enrollment, your scholarship will be disbursed. However, the amount may be adjusted to cover tuition costs. Please note that scholarships have a fixed allocation or a set number of disbursement installments. If any portion of your scholarship was applied toward tuition for dropped courses, it will still count toward your total allocation or as a completed installment. SLU will not increase the scholarship amount or extend the number of installments under any circumstances.

3. Is this scholarship canceled if I take a leave of absence?

Awardees are expected to complete their program without interruptions. The Teacher's Scholarship for Community Leadership may be deferred to the next semester of enrollment if a Leave of Absence (LOA) or similar condition is approved by the Registrar's Office.

4. What happens if my GPA falls below the minimum requirement?

Awardees must maintain the minimum cumulative GPA for their academic level:

- **3.0 for graduate students**

Failure to maintain the required GPA will cause future scholarship installments to be canceled.

Your cumulative GPA is derived from all coursework taken in an academic term. Accordingly, scholarship recipients are strongly encouraged to resolve incomplete (INC) grades immediately. The system cannot make an accurate determination of your cumulative GPA with incomplete coursework. Incomplete (INC) grades that remain unresolved into the next semester, when a scholarship installment is scheduled for disbursement, will result in the award being decertified. This will lead to the cancellation of that installment as well as any future disbursements.

Other Scholarships and Emergency Funds

include a range of institutional awards and short-term financial assistance programs designed to support students with unique academic opportunities or unexpected financial challenges. This category may include funding for experiential learning opportunities, such as internships or applied learning experiences, as well as emergency assistance intended to help students address urgent financial needs that could otherwise disrupt their ability to remain enrolled or continue their studies. Eligibility, application requirements, and award amounts vary depending on the specific program and the availability of funding.

In This Section:

- **Experiential Learning Scholarships**
- **Food Access Initiative**
- **Part-Time Initiative**
- **Petrie Emergency Grant**
- **Student Note Taker Award**
- **YLB Emergency Fund**

Experiential Learning Scholarships

About

Experiential Learning Scholarships are designed to support students who participate in hands-on learning experiences outside of traditional classroom settings. The primary goal of Experiential Learning Scholarships is to enhance students' educational experiences by allowing them to apply theoretical knowledge gained in the classroom to real-world situations. These scholarships often cover expenses associated with participating in an internship or research project, such as tuition and fees, books, travel costs, and living expenses.

Award Amount

- Up to \$7,000 towards the cost of tuition, fees, and other educational expenses.
- Disbursement of awards is contingent on an enrollment and site verification*

* Experiential Learning Scholarships mandate that student interns maintain enrollment in all courses necessary for their certificate or advanced certificate program for a minimum of 45 days into the semester. Furthermore, the internship site is required to confirm the intern's satisfactory progress with their institution, also completed within the same 45-day timeframe. Experiential Learning Scholarships are contingent upon the completion of these verifications; therefore, disbursement of funds does not occur until these requirements are fulfilled.

Enrollment Requirements

- Minimum of 16-credits (undergraduate) or 12-credits (graduate) in an eligible Certificate or Advanced Certificate programs.

Application Requirements

Applications *cannot* be submitted through the Scholarship Manager System for this opportunity. Students must complete a **Supplemental Application** for the desired opportunity and submit during the admissions process. For more information, please contact: UnionSemester@slu.cuny.edu or CommunitySemster@slu.cuny.edu.

Union Semester

For almost 20 years, New York Union Semester combines rigorous academic study with first-hand experience within the labor movement. Undergraduate and graduate students from across the country and around the world are paired with unions and worker-rights organizations to gain practical skills and learn first-hand the strategies these organizations use to fight for workers' rights. Student interns must fulfill a 28-hour workweek in their field of placement. Students analyze the experience they gain in the area during class time through comprehensive studies of the US labor movement. Our renowned Labor Studies faculty teach the courses.

Minimum Requirements for Union Semester

- Undergraduate Applicants:
 - Minimum cumulative GPA of 2.5 + successful completion of 45 college credits.
 - Apply to SLU's Certificate in Labor Studies (LABR-CERT) + Union Semester Supplemental Application.
 - Enroll in 16 credits (LABR-CERT).
- Graduate Applicants:
 - Bachelor's degree and a GPA of a 3.0 or higher.
 - Apply to SLU's Advanced Certificate in Labor Studies (LABR-AC) + Union Semester Supplementary Application.
 - Enroll in 12 credits (LABR-AC).

Community Semester

Community Semester is a full-time, intensive academic and service-learning program that provides students with an opportunity to put their passion for social justice to work. Students learn first-hand how community-based organizations fight for environmental justice, housing rights, immigrant rights, tenants' rights, economic justice, youth engagement, neighborhood resilience, civic justice, and community empowerment by contributing to the movement themselves. Students develop leadership skills and analyze their experience in the field by studying community organizing, community development, government, and non-profit leadership.

Minimum Requirements for Community Semester

- Undergraduate Applicants:
 - Minimum cumulative GPA of 2.5 + successful completion of 45 college credits.

- Apply to SLU's Certificate in Community Leadership (COML-CERT) + Community Semester Supplemental Application.
 - Enroll in 16 credits (COML-CERT).
- Graduate applicants
 - Bachelor's degree and a GPA of a 3.0 or higher.
 - Apply to SLU's Advanced Certificate in Community Leadership (COML-AC) + Community Semester Supplemental Application.
 - Enroll in 12 credits (COML-AC).

Food Access Initiative

About

CUNY-SLU's Food Access Initiative helps eligible students grappling with food insecurity. This program is accessible to currently registered students and is supported by the Health and Wellness portion of the Student Activity fee, as championed by the SLU Student Union. Students will only be able to request one mini-grant per semester to allow for as many students to participate in this program as possible.

Award Amount

- \$100.00 mini grant used exclusively for food purchases.

Recipients of the food access grant will receive notification of the award through their preferred CUNY SLU email account, typically within 5 – 7 business days. The award letter will contain additional details on the disbursement of the mini grant. It is important to note that due to the finite nature of the fund pool, the school cannot always guarantee the availability of funds. Should you have any inquiries, please feel free to contact Student Services at studentservices@slu.cuny.edu.

Minimum Requirements

- Be enrolled in the current semester at CUNY SLU.
- Agree that \$100.00 mini grant must be used exclusively for food purchases and to keep and present the receipts of food purchases for any future food access grant requests.

Application Requirements

Applications cannot be submitted through the Scholarship Manager System for this opportunity. Students apply by completing a form. Please contact SLU's Manager of Student Support and Retention, Padraig O'Donoghue, by phone (646) 313-8321 or e-mail padraig.odonoghue@slu.cuny.edu.

Part-Time Initiative (PTI)

About

Part Time Initiative (PTI) at SLU expands on ASAP's success, extending support to part-time students in baccalaureate programs. It collaborates with various entities, including government agencies and employers, to provide tuition assistance and educational opportunities. The program targets underserved communities, offering transferable credits within The City University of New York. Launching in Far Rockaway, PTI aims to serve economically challenged and diverse communities, with plans for expansion citywide.

Students will be awarded a Certificate in the Urban Experience upon successfully completing 12 credits of pre-college courses specifically tailored to the Urban Experience. This certificate is designed to enhance literacy, numeracy, and critical thinking skills crucial for success in college. The curriculum not only delves into foundational subjects but also places significant emphasis on urban and labor issues, economic equity, and social justice, providing students with a comprehensive understanding of the complexities of urban life and society.

PTI ensures a virtually cost-free education by tapping into state aid, union benefits, and City Council support. Our goal is to remove financial barriers, allowing students to fully engage in their educational journey.

Award Amount

- Covers tuition and fees exclusively for the fall and/or spring semesters.
- May be reduced by other gift aid.
- Cannot be used for other for other educational expenses.

Minimum Requirements

- Currently enrolled at Challenge High School in Far Rockaway, Queens and concurrently enrolled in select pre-college courses.

Enrollment Requirements

- Minimum of 3 credits per semester.

Application Requirements

**** NO APPLICATION IS REQUIRED ****

The selection process for this opportunity does not require a formal application. Students are selected PTI are based on eligibility criteria. Awards are granted on a budget-available basis until the funds are exhausted. Please note that meeting the minimum criteria does not guarantee receipt of PTI.

Petrie Emergency Grant

About

Thanks to the generous support of the Carroll and Milton Petrie Foundation, students enrolled at the CUNY School of Labor and Urban Studies (SLU) are eligible to apply for emergency financial assistance. The Petrie Emergency Grant will provide emergency financial assistance to SLU students at risk of dropping out of college due to unexpected or emergency circumstances to enable them to continue their education at SLU. SLU students may be eligible for up to \$1,500.00 in emergency fund grants per semester, but no more than two (2) emergency fund awards per academic year (subject to financial availability).

Award Amount

- Up to \$1,500 per semester, directly disbursed to the student.
- Limited to a maximum of two (2) emergency fund awards per academic year, contingent upon financial availability.

Minimum Requirements

Emergency circumstances considered for the Petrie Emergency Grant include, but are not limited to:

- Recent loss of job or income.
- Homelessness, sudden loss of housing, or threat of eviction.
- Fire in living quarters.
- Theft of computer, books, clothing, or other essential belongings.
- Medical bills for necessary appointments, accidents, or surgery
- Essential vision and dental care.
- Illness or death in immediate family
- Discontinuance of necessary utilities or services.
- Loss of childcare or loss of care for elders.
- Safety needs or legal expenses associated with domestic violence.
- Replacement of essential belongings due to theft or natural disaster.
- Purchase of a winter coat or interview suit.
- Purchase of a MetroCard for travel to and from school and/or medical appointment(s)

The Petrie Emergency Grant Fund will NOT be awarded for the following:

- Tuition and fee costs or textbooks
- Previous educational debts.
- Credit card debts or loan payments.
- Legal representation or services.

Application Requirements

Applications cannot be submitted through the Scholarship Manager System for this opportunity.

Before applying for the Petrie Emergency Grant, please contact SLU's Manager of Student Support and Retention, Padraig O'Donoghue at (646) 313-8321 or padraig.odonoghue@slu.cuny.edu.

Students applying for the Petrie Emergency Grant must provide documentation of hardship or outstanding expense to support the emergency. The committee will only consider complete applications with valid supporting documentation. Students who have submitted a complete application will receive a response within 48 hours. If approved, the emergency grant will disburse within 3-5 business days of the approval date. All committee decisions are final.

Student Note Taker Award

About

Note takers play a vital role in providing essential support to students with accessibility needs. Students who require such assistance may face challenges in capturing all the information presented during lectures or class discussions due to various disabilities, such as visual impairments, hearing impairments, cognitive disabilities, or physical disabilities.

Award Amount

Note Takers are awarded based on the number of credits for the respective course, \$75 per credit (e.g., \$225 in total for a 3-credit course).

Student Note Taker Awards are initially applied towards any outstanding tuition balance. If the note taker has no outstanding balance at the time of the award, they will receive a reimbursement.

Minimum Requirements

Prospective note takers are encouraged to reach out to the Manager of Disability Services at the CUNY Graduate Center to initiate the application process. Recommendations for potential note takers may also be provided by advisement or faculty members.

Application Requirements

Applications cannot be submitted through the Scholarship Manager System for this opportunity.

Important Information

Student Note Takers and any related awards do not represent a position of employment within the City University of New York or the School of Labor and Urban Studies.

YLB Emergency Fund

About

Thanks to the generous contribution of an anonymous donor, students enrolled at the CUNY School of Labor and Urban Studies (SLU) are eligible to apply for emergency financial assistance. The YLB Fund is designed to help SLU students at risk of dropping out of college due to unexpected circumstances. The fund is a one-time award given to current students who are experiencing a temporary financial crisis (short-term; non-recurring emergency) to enable them to remain in school. SLU students may be eligible for up to \$1500.00 in emergency fund grants per semester, but no more than two (2) emergency fund awards per academic year (subject to financial availability)

Award Amount

- Up to \$1,500 per semester, directly disbursed to the student.
- Limited to a maximum of two (2) emergency fund awards per academic year, contingent upon financial availability.

Minimum Requirements

Examples of circumstances that will be considered:

- Temporary loss of job or income.
- Homelessness, sudden loss of housing, or threat of eviction.
- Unexpected medical expenses.
- Loss of childcare for dependents.
- Discontinuance of necessary utilities or services.
- Safety needs or legal expenses associated with domestic violence.
- Replacement of essential belongings due to theft or natural disaster.
- Travel costs related to a death or illness in the immediate family.

The YLB Fund will NOT be awarded for the following:

- Tuition and fee costs, travel, or textbooks
- Previous educational debts.
- Credit card debts or loan payments.
- Legal representation or services.

Application Requirements

Applications cannot be submitted through the Scholarship Manager System for this opportunity.

Before applying for the YLB Fund, please contact SLU's Manager of Student Support and Retention, Padraig O'Donoghue, by phone (646) 313-8321 or e-mail padraig.odonoghue@slu.cuny.edu.

Only complete applications with valid supporting documentation will be considered. Applications will take 7-10 business days to process.

**** This Page Intentionally Left Blank ****

Directory

Enrollment Services

Supports prospective and newly admitted students through the admissions process, onboarding, and enrollment guidance.

Email: Admissions@slu.cuny.edu

Director: Shannon Clarke, Chief Enrollment Officer & Executive Director

IT Service Desk

Provides technical support for student systems, including CUNYfirst access, email, and general technology assistance.

Email: ServiceDesk@slu.cuny.edu

Director: Jeff Rickman, Chief Information Officer

Office of the Registrar

Maintains academic records, supports course registration, and ensures the accuracy and integrity of student information.

Email: Registrar@slu.cuny.edu

Director: Laurie Grimes, Enrollment Registrar Director

Office of Student Accounts

Manages tuition billing, payments, and the disbursement of scholarships, grants, and other financial transactions related to student accounts.

Email: Scholarships@slu.cuny.edu

Director: Michael Giliberti, Director of Student Accounts

Office of Student Affairs

Provides a range of student-centered services, including advising, career support, counseling, and student engagement to enhance the student experience.

Email: StudentServices@slu.cuny.edu

Director: Rochel Pinder, Director of Student & Community Affairs

Approvals

All contents of this catalog have been approved on **April 1, 2026** by:

Burt Sacks

Associate Dean of Finance, Administration, and Operations

AND

Dr. Kiki “Rita” Edozie

Senior Associate Dean of Academic Affairs and Chief Academic Officer