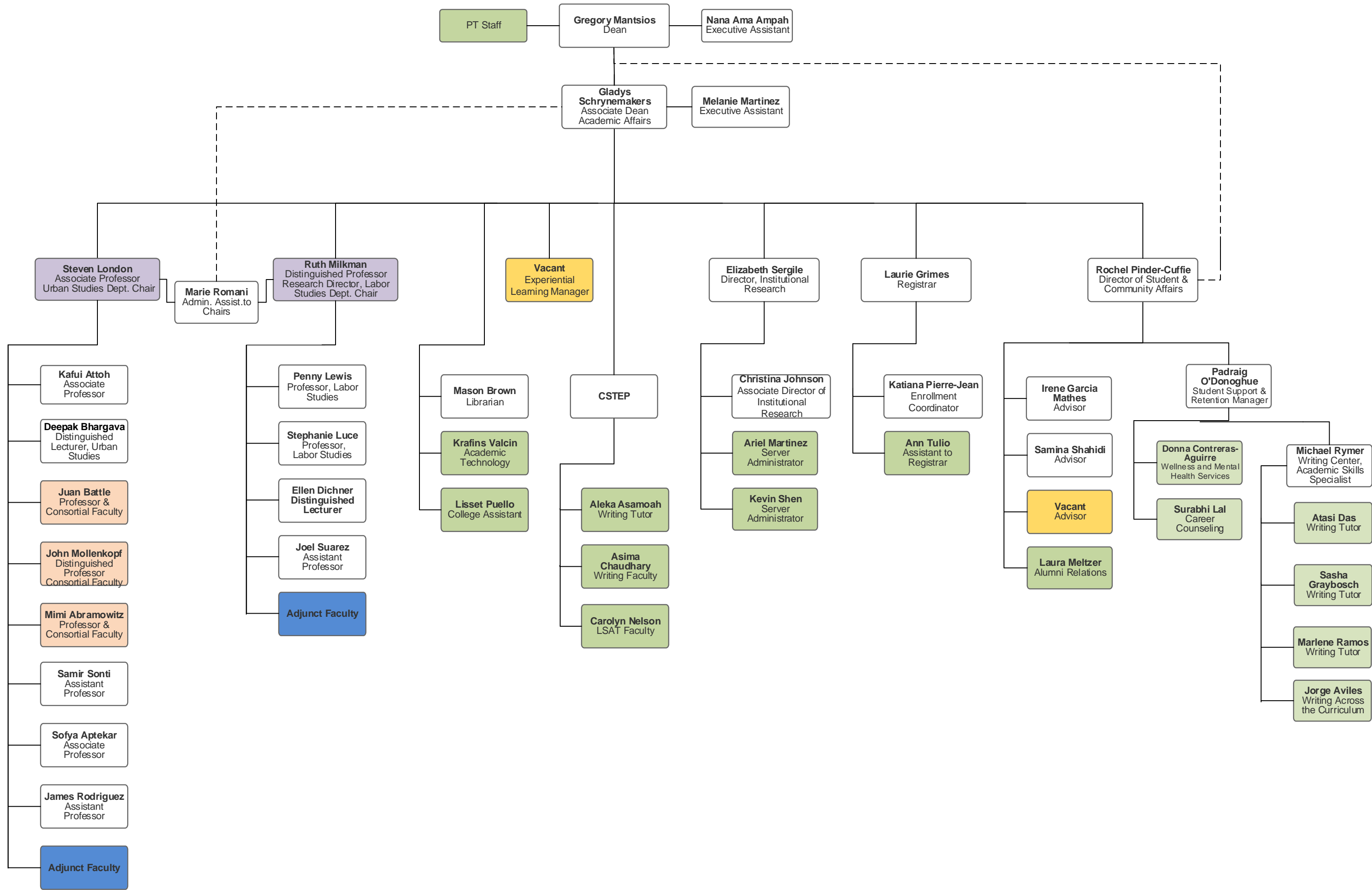


**SCHOOL OF LABOR AND URBAN STUDIES  
OFFICE OF ACADEMIC AFFAIRS  
ORGANIZATIONAL CHART**

As of 8/16/2021



- Full Time
- Part Time
- Consortial Faculty
- Adjunct Faculty
- Jointly Appointed Faculty
- Vacant